

ASHLEY ADDICTION TREATMENT



IMPACT REPORT FY25

JULY 1, 2024 - JUNE 30, 2025





04

ORGANIZATIONAL HIGHLIGHTS

07

LETTERS FROM LEADERSHIP

John Finnerty - Board Chair

Alex Denstman and Dr. Greg Hobelmann - Co-CEOs

10

PROGRAMMING

12

RESEARCH

14

ALUMNI FEATURE

MJ Johnson

16

DONOR FEATURE

Michael Adams

18

SPECIAL EVENTS

Father Martin Memorial Golf Outing

18th Annual Mae Abraham Legacy Luncheon

Alumni Reunion: A Shared Commitment to Recovery

22

CAPITAL CAMPAIGN

24

FINANCIALS

25

BOARD + STAFF

26

DONOR LISTING

Moments that Defined FY25

Each year, Ashley’s reach and impact continue to grow—both within our treatment programs and across the communities we serve. This past year, we had the opportunity to serve **2,877 patients and families** and provide **\$2,182,262 in scholarships to individuals in need**. We also took an important step toward the future by launching our capital campaign, *Unlocking Ashley’s Future*, raising over **\$12 million** to strengthen research, enhance the patient and family experience, and expand access to care through scholarships.



2,183

PATIENTS SERVED

“Most Lives Impacted”



\$2,182,262

IN SCHOLARSHIPS AWARDED

“Most Generous Spirit”



161

FAMILIES SUPPORTED IN RECOVERING TOGETHER*

“Best Support System”

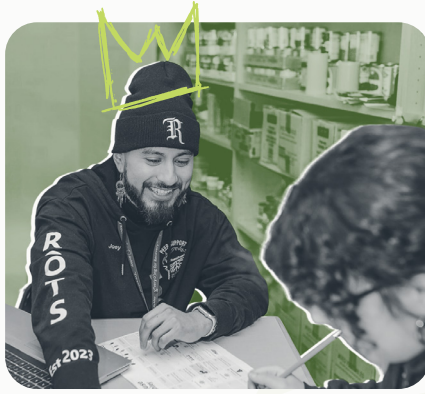


\$12M+

RAISED FOR OUR CAPITAL CAMPAIGN

“Most Forward Momentum”

*launched 6/2/2025



12,604

PEER ENCOUNTERS

“Biggest Growth Spurt”



103

UNIQUE ADOLESCENTS SERVED

“Biggest Reach”



100%

OF OUR SENIORS GRADUATED

“Brightest Futures”

Our adolescent programs, The Clubhouse and The Roots Project, had an outstanding year, **doubling last year’s peer encounters and serving 103 unique adolescents**. With the support of generous grant funding, The Roots Project expanded from Aberdeen Middle and High School to **Have de Grace Middle and High School**, extending substance use education and guidance to a new school community. Alongside that growth, the program saw **every participating senior successfully graduate**.

The Clubhouse
by Ashley

The Roots Project
by Ashley

“As a patient, I never dreamed that one day I might become board chair.”



Dear Ashley Friends and Supporters,

As Board Chair of Ashley, it is an honor to report on a year marked by purpose, momentum, and unwavering commitment to our mission. Ashley exists to transform and save lives, and each day I am inspired by the compassion, integrity, and excellence with which our staff carry out that mission. Your trust and partnership are critical to making Ashley successful, and for that, I am deeply grateful.

I am a very grateful **1995 Ashley graduate**. As a patient, I never dreamed that one day I might become board chair. Having celebrated my 30th sober anniversary this past October 25th, I commit to work as hard as I can to ensure that others have the same remarkable opportunity for recovery that I had. The path to recovery begins at a premier addiction treatment facility like Ashley.

Ashley's principles and core values are not simply words on a page—they are brought to life every day through world-class, evidence-based medical, clinical and spiritual care. Our clinical teams treat individuals and families with dignity, respect, accountability, and compassion while remaining focused on advancing improved outcomes through research, innovation, and continuous learning. This balance of excellence today and discovery for tomorrow ensures Ashley's lasting impact.

At the heart of Ashley's approach is a firm belief in treating the whole person. Spiritual care remains an essential pillar of healing, offering our patients the opportunity to reconnect with meaning, purpose, and hope. By honoring each person's unique spiritual journey, Ashley creates space for reflection, resilience, and long-term recovery.

Ashley's extraordinary staff are the stewards of this mission. Their skill, dedication, and humanity create an environment where healing can begin and lives can be restored. They carry forward the enduring legacy of Father Joseph

Martin and Mae Ashley Abraham, whose visionary leadership reshaped addiction treatment and continues to guide Ashley's work more than four decades later.

2026 represents the exciting conclusion of the Unlocking Ashley's Future Capital Campaign. The campaign is in the midst of its final, public phase. With strong momentum, Ashley is preparing for meaningful growth ahead—including thoughtful expansion of our physical plant and enhanced programming that responds to evolving needs. These investments will strengthen the patient and family experience and advance research that will benefit the broader recovery community.

Ashley's future is one of promise - rooted in a powerful legacy, strengthened by exceptional people, supported by grateful alumni, and propelled by a shared belief in recovery and hope. The impact reflected in this **FY25** Annual Report bears testament to what we can accomplish together.

Thank you for your generosity and enduring commitment to Ashley. Together, we are unlocking a future where healing is possible, recovery is sustainable, and lives are transformed.

With gratitude,



John Finnerty
Chair, Board of Directors

Dear Friends of Ashley,

As we reflect on Fiscal Year 2025, we remain deeply grateful for your continued partnership in Ashley's mission to transform and save lives. Your generosity and belief in our work sustain a place of healing, hope, and renewal for individuals and families facing the devastating impact of substance use disorder. It is an honor to share the progress we made together this past year.

FY25 was a year of meaningful advancement for Ashley—marked by growth in care delivery, thoughtful program development, and continued focus on clinical excellence. We expanded access through our growing outpatient services, strengthening our continuum of care, while reintroducing our in-person family program to enthusiastically positive reviews, recognizing the vital role families play in recovery.

At the core of Ashley's impact is our distinctive model of care, grounded in three integrated phases of treatment: clinical, medical, and spiritual. Through the science of medicine, we treat the physical dimensions of addiction. Through the art of therapy, we foster insight, resilience, and emotional healing. And through the compassion of spirituality, we offer dignity, meaning, and hope—supporting the whole person in body, mind, and spirit.

Throughout the year, we continued to refine and strengthen our programs to meet the evolving needs of those we serve. Establishing and maintaining specialized treatment tracks remains central to our mission, ensuring care that is personalized, comprehensive, and responsive.

Beyond direct care, Ashley extended its influence through strategic partnerships and community engagement that promote education, awareness, and early intervention. We also advanced our commitment to research and outcomes measurement, reinforcing Ashley's legacy as a leader in accountable, evidence-based treatment and continuous improvement.

FY25 also brought meaningful progress in the Unlocking Ashley's Future Capital Campaign. Momentum gained during the year moved us closer to our \$20 million goal—resources that will accelerate research, enrich the patient and family experience, enhance our environment of care, and expand scholarships so that financial hardship never prevents access to life-saving treatment.

While buildings and programs matter, our greatest impact is measured in lives restored. Each individual who finds recovery at Ashley reflects the power of compassionate, integrated care—and the generosity of supporters like you who make that care possible.

As Co-CEOs and Presidents of Ashley, we are honored to steward this mission and confident in the organization's future. With your continued support, Ashley will remain a place of healing, innovation, and hope for generations to come.

With sincere gratitude,



Alex Denstman, MBA
Co-Chief Executive Officer & President



Greg Hobelmann, MD, MPH
Co-Chief Executive Officer & President

“While buildings and programs matter, our greatest impact is measured in lives restored.” 



For more than 40 years, philanthropy has fueled hope at Ashley. Since 1983, the generosity of donors and partners has helped more than 75,000 reclaim their lives through care rooted in dignity, compassion, and belief in the possibility of recovery. Guided by the visionary leadership of our co-founders, Father Martin and Mae Ashley Abraham, Ashley was built on a revolutionary idea: that substance use disorder should be treated with humanity, excellence, and unwavering respect. Their bold philosophy—“Ashley: The Possible Dream”—did more than inspire change; it transformed the standard of care and continues to shape lives today.

With donor support, Ashley is advancing the future of addiction treatment. We are investing in evidence-based practices, clinical innovation, and research-informed programming that strengthen outcomes and expand access to care. Our vision is clear: a world where recovery is free from stigma and every individual has the opportunity to heal. Through a comprehensive continuum of services that extends beyond treatment to families, alumni, and youth, Ashley delivers lasting impact—creating ripple effects that strengthen individuals, families, and communities for generations to come.

Ashley's continuum of care and programming for alumni, youth, and families allow us to say we offer Everything for Recovery®.

Inpatient Care

Ashley's inpatient program at our Havre de Grace, Maryland campus provides a deeply immersive healing environment where recovery can begin with stability and hope. Supported by 24/7 medical and clinical care, patients receive individualized treatment that addresses physical health, emotional well-being, and spiritual renewal. Donor investment ensures that each person receives comprehensive, whole-person care during this critical first step toward recovery.

Outpatient Care

Ashley's outpatient services extend the reach of our mission to individuals who require flexibility without sacrificing quality. At our Bel Air, Maryland location, patients benefit from therapy, medication management, and care for co-occurring disorders while remaining connected to their daily lives. Philanthropic support helps make this essential bridge to recovery accessible to those balancing treatment with work, school, and family responsibilities.

Extended Care

Sustained recovery often requires continued structure and support beyond an initial treatment stay. Ashley's extended care program provides that essential next chapter, offering individuals the time, guidance, and accountability needed to strengthen their recovery foundation. With an emphasis on life skills, relapse prevention, and continued therapeutic engagement, this program helps participants build confidence and independence—outcomes made possible through donor generosity.

Recovering Together

Recovering Together is a powerful expression of Ashley's belief that healing extends beyond the individual. This in-person program offers loved ones of residential patients the opportunity to engage in meaningful education, reflection, and growth as they prepare for life after treatment. Developed in response to families seeking deeper connection and understanding, this optional, fee-based program enhances Ashley's family services by equipping families with tools to support recovery while caring for their own well-being. At its heart, Recovering Together affirms that recovery is strongest when shared.

Family Services

Addiction affects entire families, and Ashley's Family Services are designed to foster healing across generations. Through virtual support meetings, educational resources, and therapeutic opportunities, families gain insight, resilience, and hope. Donor support helps break cycles of substance use disorder by empowering families to heal together—creating healthier futures for both current and future generations.

Alumni Services

Ashley's impact does not end at discharge. Our Alumni Services reflect a lifelong commitment to those we serve, ensuring that connection and support continue well beyond treatment. Through reunions, Recovery Enrichment Days, regional gatherings, and ongoing engagement with our Alumni Support team, alumni remain connected to a community that understands, supports, and celebrates recovery. This enduring network—strengthened by philanthropy—turns recovery into a shared, lifelong journey.

Youth Services – The Clubhouse and The Roots Project

Prevention is a powerful investment in the future. The Clubhouse by Ashley is a free after-school and summer program for teens ages 12–17 in Harford County, Maryland, providing a safe, supportive environment where young people can thrive. Complementing this work, The Roots Project by Ashley delivers peer-led, in-school prevention and early-intervention support for students in grades 6–12—expanding in FY25 to include Havre de Grace Middle and High School. Together, these programs remove barriers to care and empower young people through mentorship, education, and connection, helping more than 100 adolescents in 2025 build resilience and make healthy, substance-free choices long before addiction can take hold.

Advancing Evidence-Based Addiction Care

In partnership with faculty from Johns Hopkins University School of Medicine, Ashley Addiction Treatment continues to advance evidence-based addiction care through independent and academic research focused on treatment effectiveness, recovery trajectories, and the biological and behavioral factors that shape outcomes.

Measuring What Matters

In 2025, Ashley released its second Outcomes Report, drawing on more than four years of patient data and over **16,000 patient-reported outcome assessments**. Key findings include:

- Meaningful reductions in **anxiety, depression, and stress** during treatment
- Measurable gains in **resilience, spiritual well-being, group cohesion, and therapeutic alliance**
- Strong post-discharge outcomes, including **high rates of abstinence, quality of life, and recovery engagement**

Academic & Clinical Studies

Current and upcoming projects include:

- Sleep and stress recovery in individuals with substance use disorders
- Cognitive health and aging in older adults with alcohol use disorder
- Clinical trials evaluating **insomnia treatments for OUD**, as well as **GLP-1 agonists, naltrexone, and novel sleep medications** for AUD

Research in Action

Ashley's independent research program supports real-time, personalized care through:

- **Standardized outcome monitoring** to guide clinical decision-making
- Integration of **wearable biometric data**, including sleep, activity, and cardiovascular strain
- **Digital tools** that track engagement and support recovery after discharge

2025 Research Milestones

- Published Ashley's second **Annual Outcomes Report**
- Reached **18 peer-reviewed publications** with national media coverage
- Completed the first retrospective analysis of Trac9 data, **addressing a leading research question** on the role of **GLP-1 medications** in recovery outcomes

Read the full Outcomes Report here

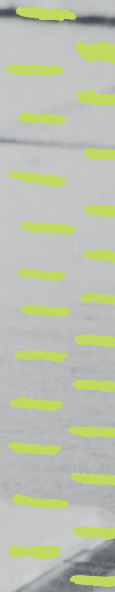


Together, these efforts reflect Ashley's commitment to measurable, personalized, and continuously improving care—using research not only to advance the field, but to improve outcomes for every patient we serve.





“Ashley provided me with a safe and healing place...”



“It was pretty scary before sobriety,” admits MJ, the calmness in his voice belying the level of desperation to which he and his life had plummeted. “I was, let’s just say, happy to not wake up.” But after several failed attempts at sobriety and a painful two-year relapse, MJ Johnson arrived at Ashley’s front door with hopes of a new and lasting solution. While he acknowledges now that a Higher Power led him to Ashley, he also admits that there was more than a little reluctance. At the time, he wasn’t sure that “God with a capital G” was something he could wrap around his heart or his head.

MJ’s growth into recovery began to blossom at Ashley with Recovery Dharma, a practice he acknowledges felt “less forceful and drastic” than some of the other messages he was being presented at the time. In time, the nurturing care of Ashley staff provided him with the grace, and the space, he needed to heal. The turning point for MJ was a prayer, one in which he earnestly prayed for something – whatever it was that made him resistant to a solution – to be removed.

In that moment, he recalls, an answer came: “The obstacle is you.”

The experience that followed at Ashley paved the way for MJ to not just arrive, but to thrive. He remembers fondly the warmth and comfort of Rachael, who made him feel safe at a time when he was filled with only fear and anxiety. A counselor named Jay was among those who made the biggest impact, helping MJ recognize that his dreams could be realized, and that as his resentments faded away, the strength of his restored character and a newly found resiliency would remain.

“Ashley provided me with a safe and healing place,” recalls MJ, “where I could discard all I thought I knew about myself, and start laying the cornerstones of who I was meant to be all along.”

MJ has remained determined to keep that Ashley connection as robust as ever. After more than a year sober, he speaks to the patients regularly, and is very active with the Virtual Alumni Chapter. There’s clearly still a vibrancy for Ashley that flows out of and through him.

“Ashley is magical, spiritual, and hallowed grounds,” MJ says with grateful reverence. “There’s just something about being there – driving up that long driveway – that heals the soul.” The invaluable gift MJ gives back in return is his own inspirational story to those patients who are about to begin the journey he began in 2024.

“I spent 2024’s Alumni Reunion in inpatient,” says MJ with a smile. “Yet in 2025, I led the Sobriety Countdown and brought my family to reunion. What a full circle moment.” MJ’s transformation, like all in recovery, continues. Now working with those in recovery himself, he freely affirms that he is right where he is supposed to be. A beloved prayer – “God, lead me where you need me and help me when I get there” – is his guide.


And his advice to a “younger self,” that hesitant guy that arrived at Ashley full of uncertainty? “Let it happen,” says MJ gratefully. “When we try to block the bad things, we can also block the good stuff – and therefore block God. Just let it happen.”

“I am the son of the son of a Baptist minister. Over the years, I had bought and sold a number of businesses and done very well. I had four kids, a beautiful wife, and a big house. It’s five or six in the morning, and I’m slumped over my desk in my office—where I could easily reload with as much alcohol as I needed and try to sleep a bit. I’m nearing the end of a ten-day bender, locked in a losing battle with alcoholism. Then suddenly, I’m jolted sober, and I hear a voice softly speaking my name. *‘That’s enough, Michael. It’s time.’*”

Michael Adams first tried to get sober in 2007. After countless failed attempts, he began to wonder if he was one of those “unfortunates” he’d read about—those who might be “constitutionally incapable” of recovering. With fifty or more white chips rattling in his pocket and his life spiraling out of control, a friend referred him to Ashley. By then, his once-robust finances were gone, and there was no way he could afford treatment. On December 13, 2009, he learned he’d been awarded a scholarship. Within days, he arrived on campus.

Almost immediately, he met Roberto, a fellow patient who remains one of his closest friends to this day. Daily Mass in the chapel became a cornerstone of his recovery, while time spent with Father Mark and Reverend Dahl provided spiritual grounding he didn’t know he needed. Sessions with his counselor, Barbara, helped him confront the emotional depths of addiction.

“Being there over Christmas was hard,” Michael recalls. “But in a way, it made it special. It helped me focus on what truly mattered.” Family weekend proved pivotal—an opportunity for healing and honesty. “I had some truths that just needed to get smoked out.”



Upon leaving Ashley, Michael made a vow to repay his scholarship—a promise he fulfilled within his first year of sobriety. Since then, he has provided extraordinary financial support to Ashley and referred others into its care, many of whom have gone on to thrive, achieve lasting recovery.

Today, Michael remains deeply connected to the Ashley community, often returning for events and programs. *“Staying connected is a vital part of my recovery,”* he shares. “It’s my responsibility—not only to give back in part what was given to me, but to live out the 12th step.”

Looking back, Michael sees treatment as a necessary part of his story. He knows how it worked for him, and he’s confident that it will work for others. “God was very good to me,” he states. “I need to help preserve Ashley for the next person that needs this incredible solution.”

Further reflecting on what made his experience at Ashley transformative, Michael explains, “The spiritual, medical, and clinical care all came together in a way that left me no excuses. Ashley touched all those places inside me while helping me turn to God. It stripped away the things I used to hide behind.”

The trajectory of Michael’s life has been changed by what Ashley has been able to provide. As a result, Michael’s gratitude for Ashley runs deep. “The people at Ashley are amazing—both then and now. What they do is hard, and it’s hard to sustain. But they changed my life – that place changed my life. I simply tell people, *‘Ashley is the most special, most magical place on the face of the earth.’*”

“I need to help preserve Ashley for the next person that needs this incredible solution.”



Linked For A Meaningful Mission

Established in 2000 to honor the life and legacy of Ashley’s visionary co-founder, Father Martin, the Father Martin Memorial Golf Outing brings together supporters for a day of friendly competition and camaraderie in support of Ashley’s mission to transform and save lives. Proceeds from the outing benefit the Lou Bantle Military Scholarship Fund, helping veterans access life-saving substance use disorder treatment at Ashley.

On June 2, 2025, 100 golfers gathered at Elkridge Golf Club for a picture-perfect day on the course. Beautiful weather, spirited competition, and meaningful connection made for a memorable event filled with fellowship and shared purpose.

Thanks to the extraordinary generosity of our golfers, sponsors, and donors, the 2025 Father Martin Memorial Golf Outing raised more than \$66,000 in support of the Lou Bantle Military Scholarship Fund.

Ashley extends heartfelt gratitude to our lead sponsors, golfers, volunteers, and donors whose support made this event possible.

Premium Sponsors

Harford Community College
The Harms Family
Lockheed Martin
Jimmy Fragoyannis
Skratch
Aleragroup
MG Harry Greene Chapter of the AUSA
AMFM Healthcare



18th Annual Mae Abraham Legacy Luncheon

On May 15, 2025, more than 150 Ashley supporters, friends, and employees gathered on Ashley's campus to honor the life and legacy of co-founder Mae Abraham at the 18th Annual Mae Abraham Legacy Luncheon. The event reflected Mae's enduring spirit of compassion, hope, and service.

Ashley was proud to recognize Denise Bertin-Epp, RN, MS, Chief Executive Officer of the National Association for Children of Addiction, with the Mae Abraham Legacy Award, and Wendy Insalaco, PhD, LCADC, LCPPC, Director of Quality Outcomes and Model of Care, with the Mae Abraham Employee Excellence Award. The program also featured an inspiring keynote address by Rachel Pappert Docekal, MBA, Ed.D.

The Luncheon supports the Mae Abraham Scholarship Fund, which provides critical assistance to women seeking substance use disorder treatment at Ashley. Thanks to the generosity of our community, more than \$50,000 was raised to sustain this vital fund.

Ashley extends heartfelt gratitude to our sponsors, attendees, and donors who made the 2025 Mae Abraham Legacy Luncheon a meaningful tribute to Mae Abraham's vision and mission.

Platinum Sponsorship

Boies Schiller Flexner LLP

Gold Sponsorship

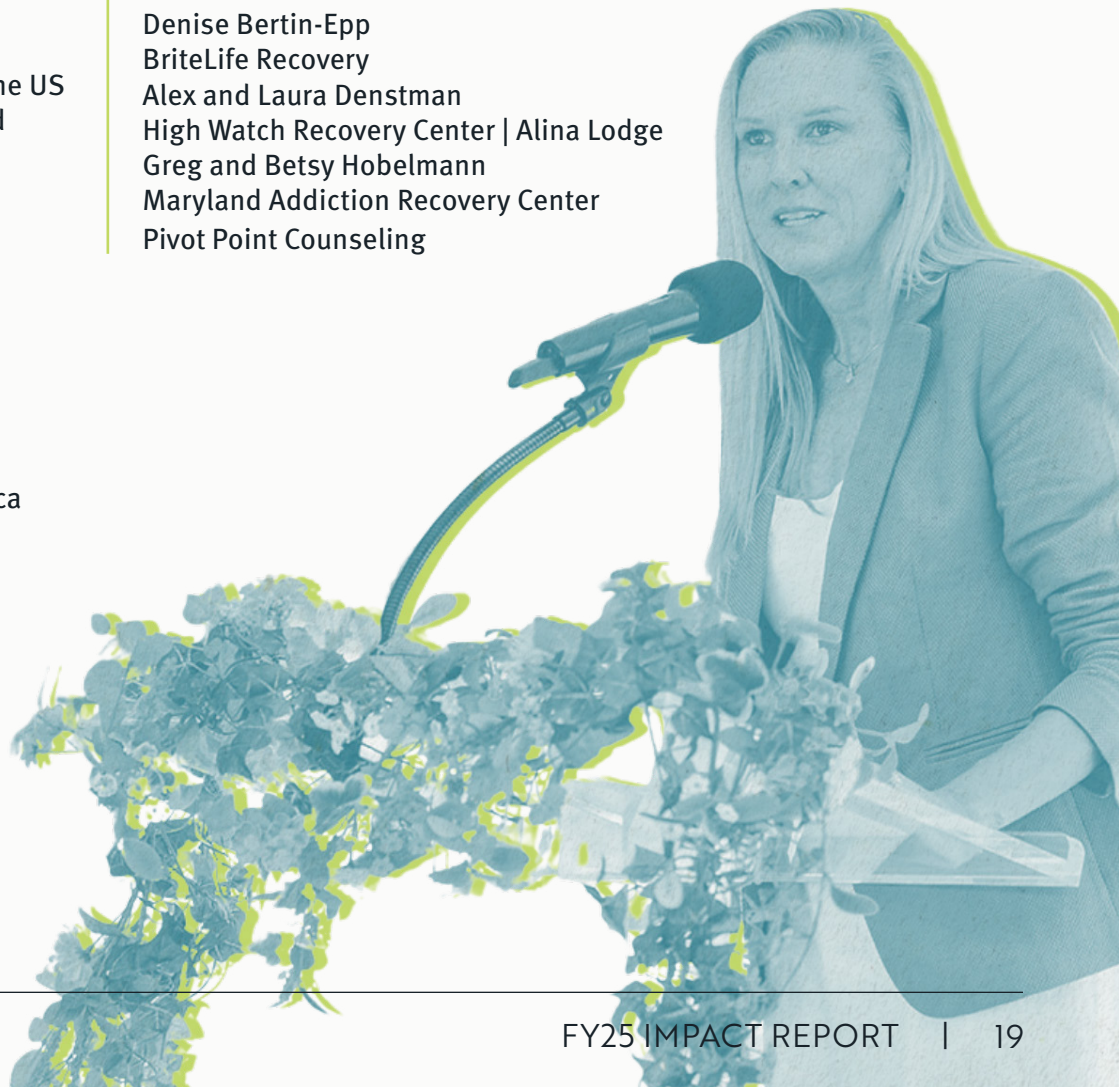
Associated Sulpicians of the US
American Design and Build
The Fragoyannis Family
The Hanley Foundation
PNC Bank

Silver Sponsorship

Caron Treatment Centers
CCS Fundraising
Toni Griswold
Phyllis Raskin-Hadley
Recovery Centers of America
Release Recovery

Bronze Sponsorship

Addiction Connections Resource
B.F. Saul Insurance
Denise Bertin-Epp
BriteLife Recovery
Alex and Laura Denstman
High Watch Recovery Center | Alina Lodge
Greg and Betsy Hobelmann
Maryland Addiction Recovery Center
Pivot Point Counseling





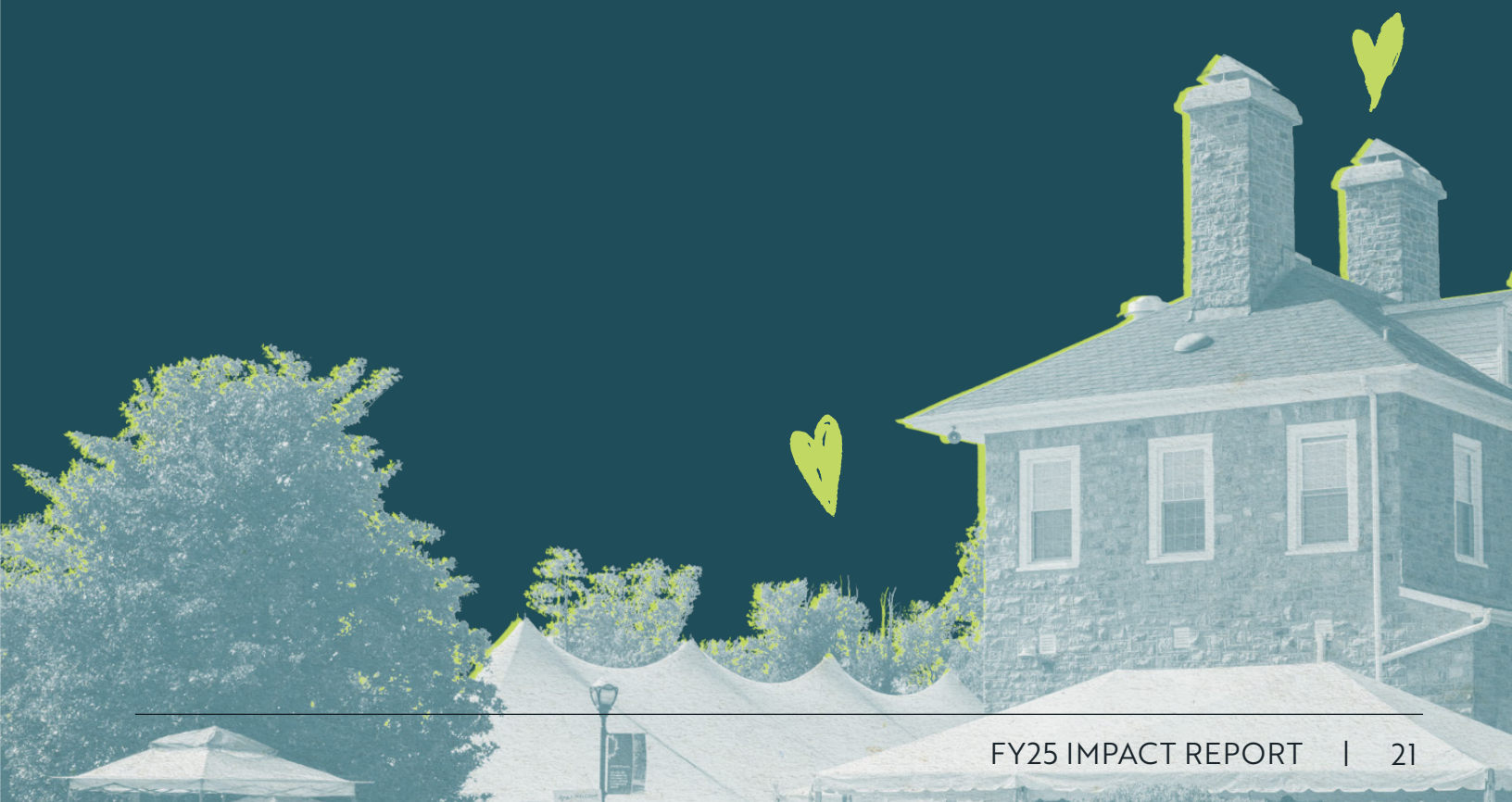
Alumni Reunion: A Shared Commitment to Recovery

Ashley's 2025 Alumni Reunion, held in September, was a vibrant celebration of connection, resilience, and community. More than 1,000 alumni, family members, and loved ones filled campus with laughter and reflection as they returned to honor their recovery journeys, reconnect with friends, and celebrate the lifelong bonds that define the Ashley community.

The day was marked by inspiring moments, including heartfelt remarks from Jimmy Fragoyannis, who shared his powerful story of recovery and renewal. MJ Johnson energized the crowd with a spirited sobriety countdown, while Beau Malatesta, Director of Development, shared some of his personal sobriety journey in addition to some exciting updates on the momentum and impact of the Unlocking Ashley's Future Capital Campaign. Throughout the day, guests of all ages enjoyed a petting zoo, games, refreshing Kona Ice treats, and a plentiful lunch buffet. Live music set the tone for celebration—and even drew a few dancers into the aisles.

This year's Alumni Reunion merchandise was a hit, with popular Alumni T-shirts, engravable tribute locks for Ashley's permanent campus fence installation, slates from the original Chapel roof, and more. Proceeds from these meaningful items directly support Ashley's mission to transform and save lives by uniting the science of medicine, the art of therapy, and the compassion of spirituality.

Each Alumni Reunion is a powerful reminder of the hope, strength, and joy found in recovery—and of the extraordinary role Ashley's alumni community plays in supporting healing, connection, and lifelong sobriety.

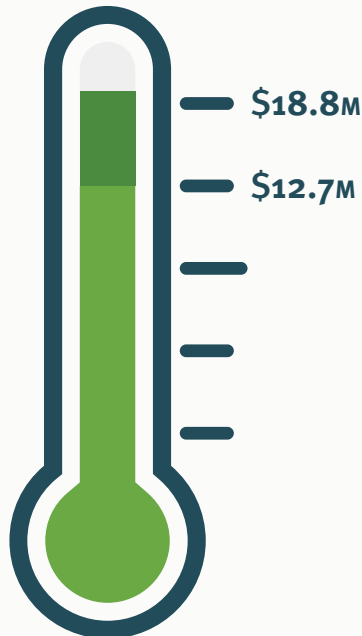


Unlocking Ashley's Future Campaign

In 1983, Father Martin and Mae Abraham began treating those suffering from Substance Use Disorder with a dignified and holistic approach. Now, more than 40 years later, Ashley is looking ahead with a bold vision for transforming the field of SUD treatment, uniting the pioneering spirit for Father Martin and Mae Abraham with the scientific research of today.

The Unlocking Ashley's Future Campaign is a transformative, \$20 million effort to:

- Accelerate research to advance substance use disorder treatment
- Enrich the patient and family experience
- Enhance the environment of care
- Increase our impact through scholarships



Thanks to the generosity of Ashley alumni, families, friends, private foundations, government grants, our staff members, and the Board of Directors, we raised **\$12,760,705** from 148 donors in FY25.

As of January 2026, we have raised **\$18,823,000** toward our \$20 million goal.

Through expanded access to care, stronger family connections, a state-of-the-art research center, and spaces that reflect the worth of every life we serve, we are shaping the future of recovery.

FY25 Financial Highlights

TOTAL REVENUE	\$ 50,532,344	
Net Patient Service Revenue	\$ 30,975,458	61%
Fundraising Revenue	\$ 10,359,873	20%
Investment Income	\$ 8,096,111	16%
Other Revenue (Oak Store & Grants)	\$ 1,100,902	2%

TOTAL EXPENSES	\$ 37,340,261	
Program Services	\$ 28,327,321	76%
Management & General	\$ 6,713,062	18%
Fundraising	\$ 2,299,878	6%

CHARITY CARE **\$ 2,182,262**

Net Assets, Beginning of Year	\$ 114,086,741
Change in Net Assets	\$ 13,192,083
Net Assets, End of Year	\$ 127,278,824

INDIVIDUALS & FAMILIES SERVED **2,877**

Inpatient	1,403
Outpatient	573
Extended Care	52
Behavioral Health & Wellness	77*
Family Services	669
Youth Prevention	103

*launched 10/1/2024

Board of Directors

John Finnerty, Chair
Phyllis Raskin-Hadley, Vice Chair
Jim Denvir
Charlie Fenwick
Dev Ganesan
Jessie Nance
Bill Bruns
Dr. Eric Strain
Toni Griswold
Denise Bertin-Epp

Executive Leadership Team

Alex Denstman, MBA
Co-CEO & President

J. Gregory Hobelmann, MD, MPH
Co-CEO & President

Elaina Denu
Chief of Staff & Corporate Secretary

Leadership Council

Jami Mayo Barney, MBA
Research Manager

Shane Burke, CPRS, RPS, RCP
Assistant Director of Community Support Services

Aaron Bruzzese, CPRS, RPS, RCPF
Director of Patient & Community Support Services

Marc Butler
Director of Clinical Outreach

Gregory Giles
Manager of Wellness Services

Wendy Insalaco, PhD, LCADC, LCPC
Director of Quality Outcomes & Model of Care

Senior Management Team

Jennifer Aguglia, LCSW-C
Vice President of Clinical Services

Daniel Bochicchio, MD
Vice President of Medical Services

Aryn Faile
Director of Revenue Cycle, Payer Relations & Contracts

George Gurrera RN, LCSW-C, MPA
Director of Quality, Compliance, & Risk Management

Mark Hushen, MDiv, MA
Vice President of Spiritual Care & Wellness

Rebecca Miller
Sr. Director of Business Development

Lester Edwards
Director of Information Management

Stephanie O'Toole
Director of Human Resources

Shana Koslowsky, MFA
Director of Marketing & Communications

Beau Malatesta
Director of Development

MaryJane Martz, LCSW-C
Clinical Director of Residential Services

Tasha Peniche, LCSW-C
Director of Outpatient Services

Kevin Piper
Director of Facilities & Safety



Ashley is deeply grateful to the individuals, families, and partners who supported our mission during FY25. Your generosity helped make healing, hope, and recovery possible for those we serve.

A Mission for Michael Healthcare
 James & Virginia Abel
 James O. Abel
 Gina & Delbert Adams
 Michael & Juliet Adams
 Tiffany Adams
 Addiction Connections Resource, Inc.
 John & Linda Agnew
 Jennifer Aguglia
 Jessica Aho & Taylor Brittingham
 Kiersten K. Airey
 Anthony & Patricia Akstin
 Dana A. Albertoli
 Donna K. Allen
 Kathryn Allen
 Loreen D. Allen
 Patrick H. Allen
 Susan & Lawrence Alleva
 Allied Climate Technology
 Alpas Wellness
 American Design and Build, LTD
 American Online Giving Foundation
 America's Charities
 Susan Anderson
 APGFCU
 Iris & Michael Archer
 Kaci Archer
 Ardan Community Living
 Cesar A. Arias
 Heather Asbury
 O'Connor G. Ashby
 Associated Jewish Charities of Baltimore
 Associated Sulpicians of the U.S.
 Holly S. Atkins
 Joseph & Laura Atkinson
 Melissa August
 B. F. Saul Insurance
 Joseph S. Bailey
 Kelly & David Bailey
 Lesli & Joseph Bailey
 Bailey Systems LLC
 Lawrence W. Bain
 Reilly M. Baker

Scott Baker
 J. Nicholas Balducci
 Patrick Balsamo
 Jeanette Bandell
 Renata Baran
 Evelyn Barber
 Nicholas Barbieri
 Jami L. Barney
 Michael Bassler
 Frances Battey
 Marc Baumann
 J. Michael Beck
 Nicholas Beckett
 Patricia Bedsaul
 Verna Beiler
 Bel Air Middle School
 Angela Bell-Bernard
 Alan & Stacey Belsky
 David & Nan Bender
 Matthew Bender
 Bender Foundation, Inc.
 Jayne Benfer
 Kate E. Bennett
 Michelle Bennett
 Steve Bergey
 Nancy Bergsten
 Therese M. Bernhard
 Brianna N. Billings
 Mark & Susan Black
 Thomas H. Blair
 Jillian Blanski
 Lorraine Blanski
 Kristen Blaze
 Jordana Blesa
 Donald Blevins, Jr
 Kimberly Blodgett
 Elizabeth & Richard Blue
 Randi Bluestein
 Daniel J. Bochicchio
 Emily A. Bochicchio
 Boies, Schiller & Flexner, LLP
 Brian & Shawn Boland
 Janet & Edward Bondi
 Elizabeth & Paul Bonner
 Helen Bonsal
 Malcolm A. Borg
 Kevin Bormel
 Larry & Barbara Bormel
 Matthew Bormel

Linda & Charles Borromeo
 Jessica L. Bosse
 Erica & Ryan Bowerman
 Melinda Boyd
 Clarence Boyle
 Emily Brady
 Rajkamal Brahmanapalli
 Rachael S. Brannon
 BriteLife Recovery
 Taylor Brittingham
 Shaleigh Brown
 Vida Broxson
 Philip & Laurie Brumbaugh
 Bill Bruns
 Chris Brusko
 Aaron Bruzzese
 Tracy Bruzzese
 Albert J. Bucci
 Ellie Bufkin
 Steven Burgey
 Lealynn M. Burgos
 Conor Burke
 Lynn Burke
 Shane P. Burke
 Louise Burleson
 Ruby Burner
 Erica M. Burns
 William H. Burton
 Emily Bussigel
 Marc R. Butler
 Maryjean Butler
 J. Norris Byrnes
 Thomas & Debra Cafferty
 Angela Campo
 Brendan Canale
 Christine Cancila
 Lauren Cancila
 Elizabeth Canellakis
 Tristan Canter
 Frank & Billie Capano
 Mary Anna Carberry
 Susan D. Carder
 Caron Treatment Centers
 Mary Beth Carroll
 Randy Carroll
 Alveeta Carter
 Rene Carter
 Sherri & Kris Carter
 Maria G. Casey
 Linda Castrilli

Carla L. Cathcart	Holly A. Cox	Susangrace DuBose	Donald & Dolores Forck
John Caudle	Renata Craig	Melissa E. Dudeck	Amelia Ford
Kayla Cawthon	Jerry Creighton	Donna & Rick Dulski	Aaron & Amanda Forrester
CCS Fundraising	John Crockett	Cherie Duncan	Marie A. Fosello
German & Yina Chacon	David Crone & Tara Manzi	Ted Dunkelberger	Grace A. Fothergill
Tikayah S. Chandler	Michael Cronin	Mark L. Dunkum	Mary G. Fowler
David D. Chapin	Toni Cullember	John L. Dunnigan	Kathleen & Donald Fox
Charities Aid Foundation America	Carolyn Cundiff	Timothy Dunnigan	Donald Foy
Lois & Peter Charles	Ralph Cunningham	Christina Durney	Gary Frace
Charlie Health	Dennis & Teresa Czulewicz	Liselotte Durst	Jimmy & Tina Fragoyannis
Scott A. Chase	Ann W. Dahl	Gregory & Diane Dyer	France-Merrick Foundation
Jennifer J. Checkes	Alice & Dennis Dahms	Susan Dykstra	Carol G. Franklin
Elizabeth D. Christian	Sheila Damkoehler	Gregory J. Eash	Dan Freshley
Robert & Gail Chrzan	Janice Damon	Eastern Technical, Inc.	Richard & Laura Fuller
James Chwirut	William Darden	Lisa Ebersole	Joe Anna Funk & Donald Bauer
Augustus & Susan Cicala	Jay & Laura Darling	James & Janet Eder	Charlie & Pamela Fusco
Rita Cicala	Christina Darwin	Lester B. Edwards	Michael & Diana Fusting
Cindy & Tom Harlow	Jamie & Lauren Daue	Helen & James Ehret	Memory A. Fye
Charitable Fund	Bryan & Lindzey Davis	Daphne Eller	Dev & Radha Ganesan
April Clark	Sarah Davis	Valerie S. Ellis	Sid Ganesan
Barbara Clark	Nora Davison	C. S. Elmore	Adam & Alissa Ganser
Christopher Clark	Robin Davisson & David Skorton	Brenda W. Emmons	Linda Gattuso
John & Renae Clark	James J. Dawson	Kyle & Shelby Englert	Elizabeth Gearon
Jonathan Clark	Thomas & Lynda Deck	Gregory Ensor & Elizabeth Simmeth-Ensor	George Harms Construction Co., Inc.
Clark Construction Group, LLC	Jeffrey DeClue & Marta De Santis	Dennis & Lillian Evans	Amy Gerber
Clarke-Hook Foundation	Kim Del Mauro	Greg S. Evans	Amelia Gerres
Barbara Cleary	Raymond & Debbie Demaio	Isaac Evans	Harry Gesner
Aryn Clements	Robert & Norma Dempsey	Evolve Life Centers	Richard & Lisa Giacco
Robert & Barbara Clements	Alex & Laura Denstman	Robert A. Eyberger	Edward Giese
Sue Clowe Family	Elaina M. Denu	Nora Foley	Ann M. Gigliotti
Gregory Coates & Kathryn Vitarelli	Jim P. Denvir & Rangeley Wallace	Fair Play Foundation	Thomas Gilbertsen
Theresa Coetzee	Carmen A. Depasquale	Jane Faith	Gregory A. Giles
Karen Cohn	Stacie Depatta	Jessica Farnan	Lloyd C. Giles
Robert & Michelle Coker	Daniel & Terrie Deters	Janet Faust	Mike Gill
Robert & Gale Coleman	Kathleen DeVilbiss	Richard Feinstein	Collin Gillan
Andrew V. Colevas	Michael K. Dewitt	Jon A. Feldman	Thomas S. Gimbel
Mary J. Collevchio	Sharon & Robert Diaz	Steve Feldman	Kenneth J. Glatt
Thomas Collins	Bethany L. Dietz	Kelly Fennington	Brian Gleich
John & Janice Colman	Martha L. Dippell	Charlie & Muffy Fenwick	Bill & Megan Goeller
Jennifer Comer	Discovery Behavioral Health	Raymond & Barbara Finamore	William E. Goeller
Linda S. Comer	Edward & Kimberly Doheny	Benjamin & Cynthia Finder	Joan Gold
Community Foundation of Harford County	David Donabedian	Lawrence & Doreen Finnell	Nevada Gongora
Raymond C. Conrad	Linda Donaldson	John & Louise Finnerty	Frederick & Carol Goundry
Lilly A. Cooper	Ryan Donaldson	Frank Fiol	Michael & Dorothy Gray
Molly Cooper	Patrick & Cynthia Donnelly	Britt M. Fischer	Greater Philadelphia Real Estate Hall of Fame
Katherine Cornish	Teressa Doonan	Heather Fisher	Robert Greenebaum
Mark Cornish	Katherine A. Doroba	Suzanne Fitzpatrick	Howard Greenspan
Nancy R. Corson	Ellen & Stewart Dotts	Keith Flanagan	Joseph Greer
Jim & Esther Costigan	Alan Doucette	Mary & William Fleishman	Dorothea & Alphonzo Grice
Alison Cotterell	Thomas Doudiken	James Flentje	Anthony & Tory Griffin
Courtney Craig Gilbert Charitable Foundation	Michael & Kate Dowling	James & Ann Marie Flood	Peter Grina & Laura Lee
Pamela Cover	Mark S. Downey	Fluf N Fold Laundry	Toni & Jay Griswold
Adam Cowen	Riley M. Doyle	Judith & John Flynn	Robin Grizzle
Brad Cowen	Carroll Drewyer	Stacey Flynn	Virginia & William Grube
	Luke Driscoll	Cheryl E. Foley	Ted Guastello
		Nora & James Foley	George J. Gurrera
		Jayson & Judy Folus	

Korinne & Kenneth Guza	Paula Hose	Christopher P. Kerr	John & Diane Malatesta
Coale D. Gwinner	Wilbur Howell	David Keyser & Tracey	Elizabeth Malatesta
MaryEllen Hackett	Carolyn Hrdlick	Turner-Keyser	Lexi Malinowski
Paul & Lia Hackett	John Hrivnak & Jess Wallace	Claire R. Kidwell	Charles Mallory &
Kelly & Daniel Haggerty	Jacqueline Hryncewich &	Kimberly A. Kimnach	Geraldine Lee
Reza Haghghi	Ryan Delaney	Michael Kirby	Robert & Vivian Manekin
Donald Hall	June Huber & Bradley	Frank Kline	Louis Marcell
Angela Handy	Bergmann	John & Marianne Kmetz	Stanley & Rosemary
Dwayne & Angela Handy	Christopher & Sandy	Danielle Koch	Marcuss
Russell & Anne Hardesty	Hudak	Mark & Cynthia Koch	DaShawn Marks
Dollie & Tom Hare	Christine Hudson	Richard P. Koepfel	Anita & Daniel Marquitz
Harford Community College	Amy Hughes	Geoffrey & Margaret	Jason Martak
Harford County Office of	Natalie L. Hughes	Kolberg	Kurt & Mari Martin
Drug Control Policy	Brooke Nicole Humphreys	Kolmac Clinic	Linsey G. Martindale
Harford United Charities,	Aaron Hunsinger	Kona Ice of Elkton Newark	MaryJane E. Martz
Inc.	Laura Hurst	Joseph Kopasek	Maryland Addiction
Chris & Lauri Harkins	Mark Hushen	William & Gabrielle Korab	Recovery Center
Robert & Judy Harms	Tanner Hussar	Shana A. Koslowsky	Maryland Recovery
Chris Harrell	Laurie Hynson	Craig Kowalski	Conrad & Angelika Matiuk
Stephanie Harward	Wendy J. Insalaco	Andrew Kroh	Melanie Matthews
Stayton Hastings	Patrick & Shawn Ireland	Renee Krysiak	Nicole May
Ronald Heflin	Asia K. Jackson	Charles Kump	Edward McBride
Adrian Heizmann-Checa	Joseph Jackson	Lafayette Federal Credit	Paul & Christina McBride
Sally A. Helman	Michael & Carol Jacober	Union	John McCardell
Brian W. Helmer	Steven James	Sarah Landry	Kaitlin M. McCarthy
Tamar Hendel-Fishman &	Thomas & Joan Jankiewicz	Mary Lane	McCaskey Family Holding
Jacob Fishman	Andrew & Ellen Jenkins	Mathew B. Lasky	Company
Eileen Henderson	Robert & Eleanor	William & Maria Lawalt	Laura A. McClaren
Kaitlynn Hendrix	Johanning	Julie & John Layug	R. Bruce & Cecilia
Lisa Henry	Lloyd & Sally Johns	David Lazar	McCommons
Callie M. Hentz	David P. Johnson	Linda Leibley	Brian & Pamela McConnell
Ken R. Herman	Diana H. Johnson	Rose M. Levchak	Georganne McCord
Matthew J. Herrington	Donna E. Johnson	Joan Levin	Dorene McDaid
Danielle R. Hess	Kimberly Johnson	Doug Levy	Sandra McDevitt
Jyuji & Susan Hewitt	Laurence & Mary Lou	Sparkle Lindblad	Dennis McDowell
David & Caroline Hickerson	Johnson	Robert & Carole Lindes	Deborah McFadden
James & Kaye Hickey	Leslie Johnson	Alexander F. Lipinski	Peter McGahey & Jennifer
Paul J. Hickey	Maria Johnson	Lockheed Martin	Spinner
Denise Hicks	Mark Johnson	Kerri Loder	Jen McGeehan
Crystal Hicks-Brown	Robert & Kathy Johnson	John R. Long	Mary Ann McGrail
High Watch Recovery	Christopher Jones	Jorge L. Lopez-Balboa	Shirley A. McKeown
Center Alina Lodge	Maria Jones	Louis F. & Virginia C. Bantle	John C. McKnight
Kristin Hines	Michael Jones	Charitable Foundation	Kelly S. McLhinney
Melissa Hinton	Joyce Joyner	Sara Loundas	Margaret T. Mcloughlin
Robert & Karen Hitcho	Anthony Junger	Sandra & Charles Lowery	David C. McNamee
Charles & JoAnn	Barbara & Steven	LS Systems	Mark McNutt
Hobelmann	Kalandros	John R. Lucas	Eric Meany
Greg & Betsey Hobelmann	Irene Kane	Tara M. Lunsford	William & Carol Melton
Mary & Jennings Hobson	Veronica Kannan	Madden Charitable Fund	Mark G. Meltzer
John & Sally Hodge	Tammy Kapuscinski	Devin Mader	Thomas Melzer
John Hoel	Jim & Sarah Karafa	Daniel & Beth Madigan	Harry & Mary Merriken
Julie M. Hoffman	Frederick R. Karp	John & Marion Madigan	Beth Meyer
Paul Holtberg & Paulette	Nicholas Kaufman	Eugenia Magafan	MG Harry Greene Chapter
Peltz	Catherine Kelliher	Cheryl Magness	of Assoc of US Army
Anthony & Barbara Holtry	Christopher W. Kelly	Robert J. Maguire	Gianni Migliaccio
Steven J. Homans	Raymond & Suzanne Kelly	Linda & William Mahoney	Jill & Stephen Mikros
Homecoming Project	Sharon S. Kennedy	Angela J. Mahosky	Jay & Janice Miller
Mildred Hopkins	Tanya Kennedy Luminati	Molly Majoros	Mary Miller
Scott Horigan	Jane F. Keough	Beau & Sarah Malatesta	Rebecca W. Miller

Thomas H. Miller	Gloria C. Obiajulu	Cathy Raisher	Christopher M. Sause
Trevor K. Miller	Alice R. O'Brien	J. Stephen Ramey &	Nancy Savage
Robert B. Millman	Carol T. O'Hara	Kathleen Burns	John & Gioia Sawchuk
Carl & Kimberly	Sarah Oldham	Aaron Ramirez	Kurt Schertle
Miltenberger	Kristopher Olenginski	Bruce & Teresa Ramirez	Sarah Schieffelin
Julie Minner & Cameron	Alfred G. Olivier	Marc & Deborah Randolph	Adam Schmidt
Sokoloff	Michael Olmstead	Phyllis R. Raskin-Hadley &	Paul & Helen Schmitz
Richard & Katherine	Jack R. Olschewske	Richard B. Hadley	Barry & Michele Scholtz
Minutella	Thomas & Pam O'Neil	Scott Reckeweg	Kelly & William Schroeder
Debbi & Howard Mirvis	Lynn B. O'Reilly	Recovery Centers of	Steven Schuh
Julie Mitchell	Megan Osborne	America	Lori Schulz
Juanita & James Mohler	Judy & Steven Oster	David H. Reed	Schwab Charitable
Marissa Molinaro	Ryan Osterlof	Ralph Reeves	Mallorie Schwartzman
Glen Moncilovich	Raymond & Patricia	Shauna Regan	Joseph & Gail Schwarz
Mark Montgomery	O'Toole	Justin Reilly	Debra Sciabarrasi
Aaron Moore	Kathleen Ott	Release Recovery	Jamilyn M. Scott
Christopher P. Moore	Shahin Outadi & Fereshteh	Foundation	Rosemarie Sedney
Carol Moran	Raissan	Debora & Craig Relyea	Cathy Seeber
Moran Family Charitable	Karin Outlaw	Renaissance Charitable	Sally & Thomas Seibold
Foundation	Andrew W. Owen	Foundation	Mark Sells
Hannah Morehead	Nick Padfield	Jack Rice	Matthew Serel
Colton Morgan	Morgan Pagels	John Richards	Gary & Gloria Serrao
Patricia & Paul Morris	Dean Palaferro	Eric Richardson	Wade Sewell
Jeffrey & Gail Morrison	Christina Passarella	Kaitlin A. Ricketts	Perry W. Shaffer
Marybeth & Henry	Sonia M. Patel	Robert & Lourdes Riegger	Joe & Anna Shaffner
Mortimer	Paypal Charitable Giving	Catherine C. Riley	Cristopher Shaw
Carlton & Laura Moser	Fund	Susan Riley	Jack S. Sherman
Patricia Moss	Tasha T. Peniche	Shannon Rinker	Kevin Shertz & Heather
Lisa Motluck	Edward & Sharon Perraut	Bruce & Betty Ritter	Oland
Lisa Muglia	Samuel & Karen Peterson	Scott Ritter	Sydney Shupe
Betty Mullins	Frederic & Janet Pfening	Denise & Christopher	Laura Sibiski
Sheilah & Cam Mullins	Deborah Phelps	Rizzuto	SIG, an Alera Group
John Mulvenna	Eric & Anne Phillips	Karen Roberts	Company
Susan Murphy	Howard M. Phoebus	Daniel K. Robie	Ashlea E. Sigmon
Thomas Murphy	Thomas E. Piddington	Christina M. Robinson	John Simpson
Charles & Christine Murray	Ralph & Patricia Pike	Frederick & Sallie Robinson	Swati Singh
William J. Murray	Gregory & Mary Pinkard	Jeffrey J. Robinson	Christopher Sisk
Patrick Muth	Pivot Point Counseling	Michael Robinson & Mary	Dan Skahan
Michael W. Nagy	PNC Bank	Ellen Biggs	Larry & Patti Skahan
James Nakayama	Anne & Richard Powell	Norman & Carol Rocheleau	Edward & Rita Slattery
Jessie N. Nance	Kathryn & John Preston	Michael Rock & Renee	Jerilene Slaughter
Rick Nason	Michael Preston	Blankenau	Christopher M. Slayman
Shahab & Esther Nasrin	Jill C. Prevas	Marc Rodriguez	Geoffrey Smith & Maria
David & Maureen Nassef	D. Douglas & Jane Price	Brian & Mary Jo Rogers	Covalesky
National Association for	Rob & Jeannie Pritchard	Dianna Rogers	Janet Smith
Children of Addiction	Robert & Kathryn Procopio	Eleanor M. Rolfe	Lauren Smith
Adam E. Nebrich	Janet Profeta	Rotelle Development	Sandra Smith
Jeff Nelligan	Megan & Jeff Pryor	Company	Terry A. Smith
Dane A. Nichols	Joseph Purzycki	David Rotstein	Snee, Lutche, Helmlinger &
Kerry & Ho Nieh	Benjamin Pushon-Smith	Nelson Rupp Jr	Spielberger, P.A.
Kerry Nigh	Christopher Pyles	Barbara & Vincent Russell	Zach Snitzer
Dylan Norris	Pyramid Healthcare	James Ryan	Margaret P. Snowdon
Patricia Nowowieski	William & Susan Pyron	Melinda H. Ryan	Cynthia Snyder
Stephanie L. Nunag	Michael Quattrone	Patty Ryan	Nikki Soda
Ann Nunan Bavis	William Quinn	Kelly Ryland	Frank Sonson
Emily Nunn	Stephen A. Radomsky	Donato & Ruth Saponaro	Chris Spanos
George S. Nyquist &	Tyler Radulski	Jamie L. Sargent	Louis D. Sparco
Kathleen Collins	Gavin C. Raffone	Michael & Sandra Sarnac	Mary C. Spearing
Brian O'Berry	Jacqueline M. Ragone	Ally Sassano	Ned L. Spells

Matthew Spence
Autumn L. Spila
SSEA Members DSCYF
Jadaire Stansbury
Barry E. Staub
Laurel Steckel
Rahel E. Steinberger
Ronald & Rene Stevens
Rachel C. Stewart
Eugene & Suzanne Stiltner
Eric Strain
Gayle & Craig Streett
James Strickler
Maureen K. Suelau
John & Patricia Sullivan
Sunwave Health
Jessica Swan
Joe Sweeney
Joseph Sweeney
Synergy Houses
John & Katherine Tassini
Robert Taylor & Vicki
Jackson
Lavinia Taylor-Wishon
Rachael H. Teacher
Lisa Tenley
Ann Terry
Paige & Sean Terry
The Alban Foundation, Inc.
The Angela Messer Charity
Fund
The Bilby Foundation
The Blackbaud Giving Fund
The Charles & Karin
Hoffman Fund
The Charlesmead
Foundation
The Keyes-Sulat Family
Fund
The Madigan Family
Charitable Fund
The Samuel Roberts Noble
Foundation
Trudi M. Thomas
Gerhard & AnnThoresen
James B. Throne
Kathleen & Richard
Thurston
Richard & Janet Townley
John R. Townsend
Patrick Trentalange
Megan Tress
Terry Triplett
Glenn & Rebecca Tucker
Mary L. Tucker
Anthony Tuesca
Joseph & Sandi Tunney
Terry & Amy Turner
Hamilton Tyler

Gerrit & Janet Tysse
Peter & Laura Unger
United Way of Central
Maryland
United Way of Delaware
Michael & Meghan Urgo
Doris Vaina
Bill Van Voorhis
Wendy Vasquez
Patricia Vella
Jessica A. Vickers
Patricia Vise
Linda Wack
Mark Walker
Mary M. Ward
Cheryl & Michael Warren
Kevin Wartel
Scott & Susan Wartel
Mark A. Wasson
Stephen Watts
Dwayne Weaver
Jane Weaver
Kayla Weaver
Karen & Myles Weber
Kelly Weber
George D. Webster
Mary K. Weigand
Wells Fargo Clearing
Services
Gretchen G. West
Victor G. Wexler
Nancy Wheeler Balboa
Barbara & John White
David White
Phillip & Lee Ann White
Corinne M. Whitehead
Richard W. Whitlow
Walter & Barbara
Whittemore
Pamela Wiley
Brandon Willem
Erin & Steve Willett
Katherine W. Williamson
Marot W. Williamson
Rushton Williamson
Kevin M. Wilson
Norman Winskill
Philip Winsor
John Winters
Julia & Melvin Wise
Harrison D. Wright
John B. Wright
David B. Wuehrmann &
Suzanne Howren
Richard & Elizabeth
Wyrough
Clifford & Betsy York
John & Kathy Young
Joseph L. Young

Tiffany Young
Michael & Kathleen Yudd
Suzanne & John Zanardelli
Lindsey Zechar
Bonny & Craig Zeigler
William Zitzmann & Carol
Gillies
Marian Zobler
Richard & Assumpta Zweig



Ashley's Founders, '83

Through Death to Life!

Msgr. Cleahan Father Mastin

EXPLORE WAYS TO SUPPORT HERE:



Ashley
Everything for Recovery