



impact report

ASHLEY ADDICTION TREATMENT - FY24



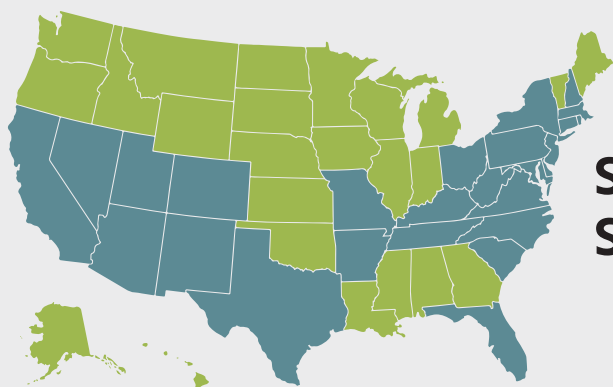
04	ORGANIZATIONAL HIGHLIGHTS
07	LETTERS FROM LEADERSHIP Jim Denvir - Board Chair Alex Denstman and Dr. Greg Hobelmann - Co-CEOs
10	PROGRAMMING
13	RESEARCH
14	ALUMNI FEATURE Julian C.
16	DONOR FEATURE Mark M.
18	SPECIAL EVENTS Father Martin Memorial Golf Outing 17th Annual Mae Abraham Legacy Luncheon Alumni Reunion: The Power of Community
22	FINANCIALS
24	BOARD AND STAFF

organization

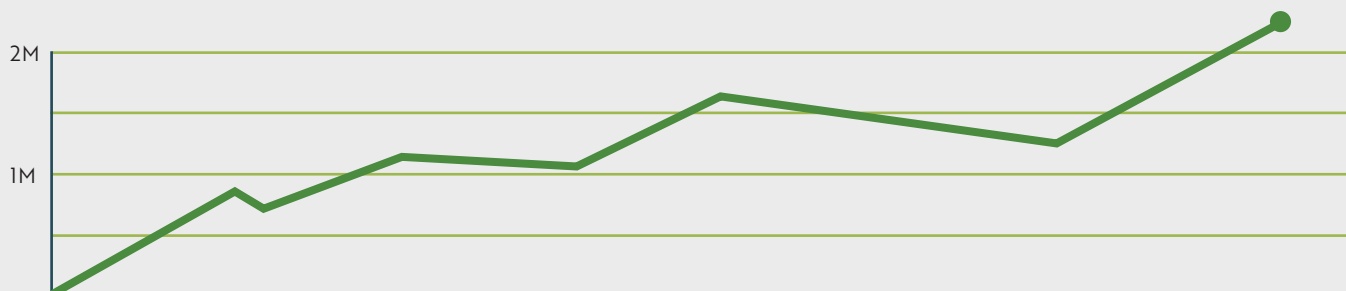
Each year, Ashley's reach and impact grow stronger—both within our treatment programs and beyond. **In the past year alone, we served over 1,300 patients across 26 states and three countries, extended more than \$2.1 million in scholarships to individuals in need, and expanded vital services for young people through our Youth Services programs.** We successfully launched a new post-treatment recovery coaching program for our DC-area alumni and published our first-ever research outcomes report. These highlights reflect Ashley's ongoing commitment to innovation, accessibility, and long-term recovery support.



1,328 NUMBER OF PATIENTS SERVED



**SERVED PEOPLE IN 26
STATES AND 3 COUNTRIES**



**\$2,182,169 IN SCHOLARSHIPS GIVEN OUT
FOR PATIENTS IN NEED**

al highlights



100+

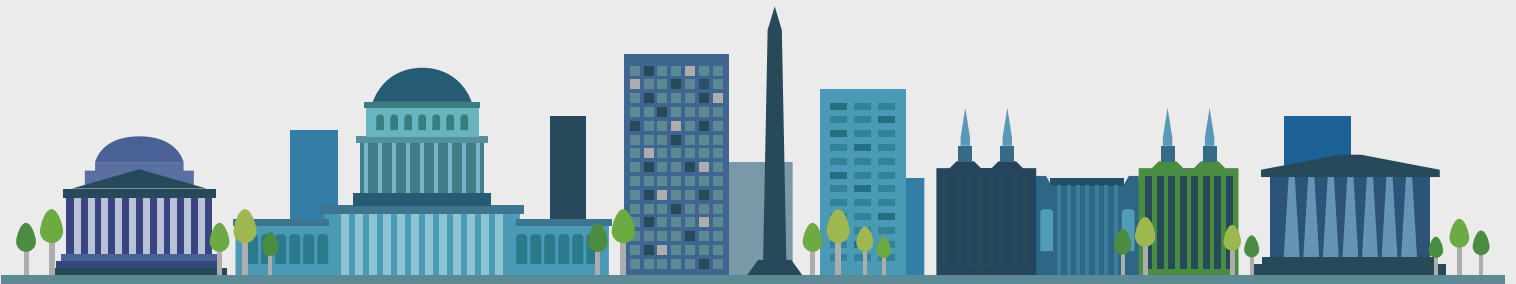
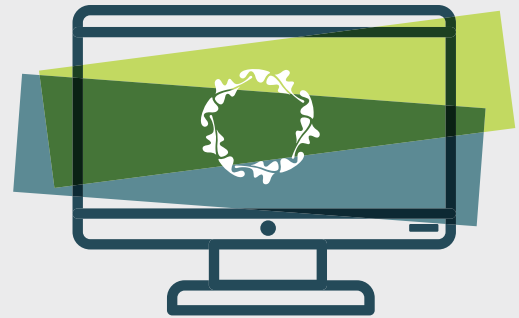
STUDENTS SERVED THROUGH YOUTH SERVICES – THE ROOTS AND THE CLUBHOUSE

PUBLISHED OUR FIRST RESEARCH OUTCOMES REPORT

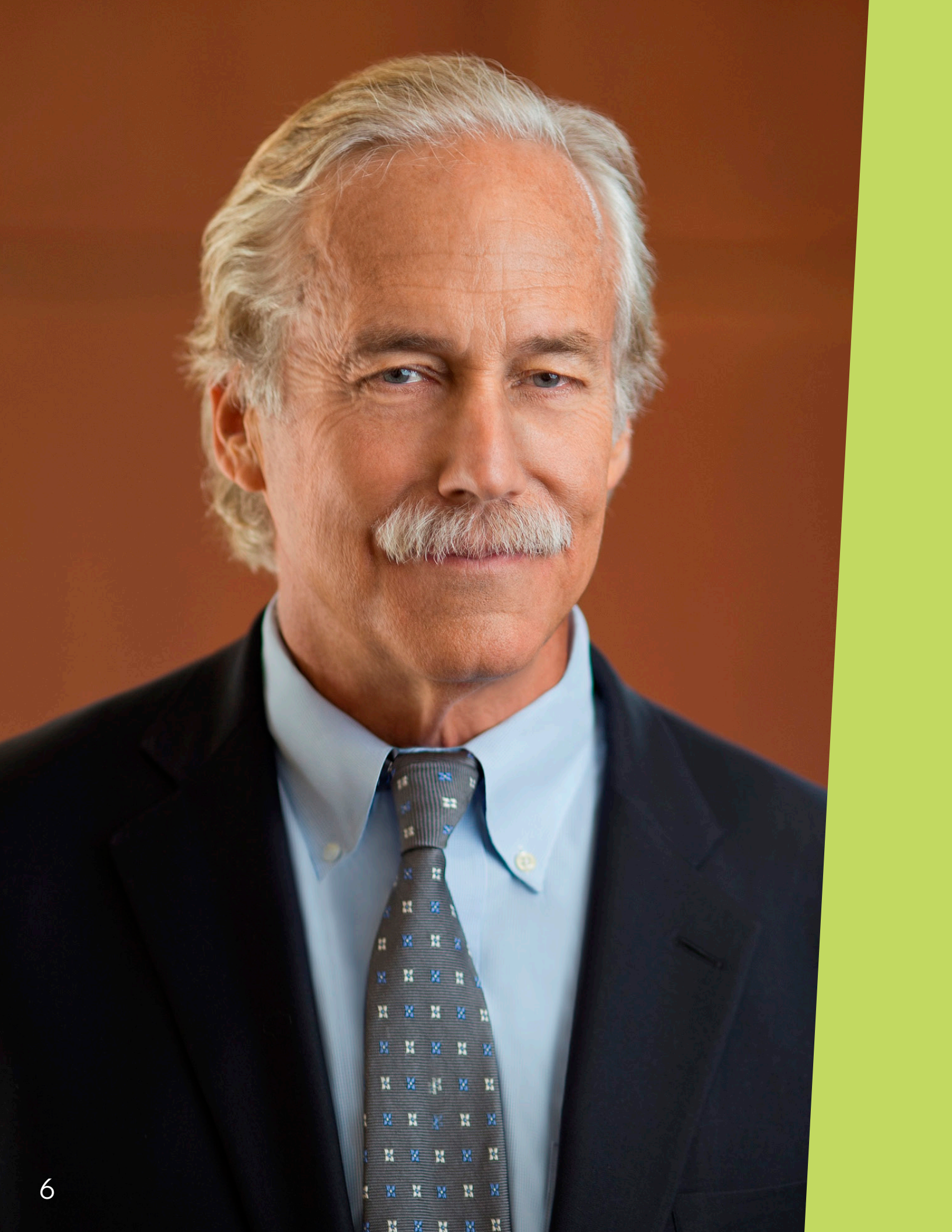


1,100+

VIRTUAL RECOVERY SUPPORT MEETINGS HELD



LAUNCHED A POST TREATMENT RECOVERY COACHING PROGRAM FOR DC-AREA ALUMNI



board chair

Dear Ashley Friends and Supporters,

As I reflect on my final year as Chair of Ashley's Board of Directors, I am filled with immense pride and gratitude. My journey with Ashley began many years ago as a patient, and it has been a profound honor to serve in this leadership role. The transformation I experienced through Ashley's treatment program has been truly lifesaving, and it has been a privilege to give back to an organization that has given me so much.

This past year has been a remarkable one for Ashley. We have continued to adapt and innovate to meet the needs of our community, ensuring that our mission to transform and save lives remains at the forefront of everything we do. Ashley's dedicated staff has worked tirelessly to provide comprehensive care and support to those struggling with addiction. Their work, together with your commitment, has helped Ashley make a significant impact on the lives of individuals, families, and their communities. I hope you will enjoy reading some of their stories in this Impact Report.

During my tenure as Board Chair, Ashley faced numerous celebrations and challenges, including its 40th anniversary and navigating the covid-19 pandemic. Through it all, we were reminded of the incredible journey that has brought us to this exciting point in our history, continuing to build on the legacy of Father Martin and Mae Abraham. Ashley is committed to continuing our work with the same passion and enthusiasm that has defined the organization since its founding. Our vision for the future includes expanding our facilities, enhancing our programs, and increasing our outreach efforts to ensure that no one in need of help is left behind.

As I step down from my role as Board Chair, I am filled with a sense of accomplishment and optimism for the future. I am excited to remain on the board, working alongside my fellow devoted Board members, and look forward to the next chapter in Ashley's history. Together, we will continue to build on our successes and strive for even greater impact.

Thank you for your ongoing commitment and support. It is your generosity and dedication that enable us to provide hope and healing to those struggling with addiction.


Jim Denvir
Chair, Board of Directors

Dear Friend of Ashley,

As we reflect on the past year, our hearts are filled with immense gratitude for your unwavering support and dedication to our mission of transforming and saving lives. Your generosity and commitment have been the cornerstone of our success, and we are thrilled to share the highlights of our journey in this Fiscal Year 2024 Impact Report.

This year has been a remarkable period of growth and impact for our organization. We have expanded our reach, enhanced our programs, and deepened our commitment to providing comprehensive substance use disorder treatment services. Our outpatient program is growing and we are in the planning stages for restarting our in-person family program.

We continue to evaluate and modify our programs to address the diverse needs of our patients, while always staying true to our founding principles of integrating the science of medicine, the art of therapy, and the compassion of spirituality. These include specialized treatment tracks for adolescents, veterans, and individuals with co-occurring mental health disorders. Our holistic approach ensures that each person receives personalized care tailored to their unique circumstances.

We have strengthened our partnerships with local organizations, Harford County Public Schools, and other healthcare providers to raise awareness about substance use disorder and promote early intervention. Our efforts have reached thousands of individuals, providing education, resources, and support to those affected by addiction.

Additionally, we have invested in research initiatives to advance the field of substance use disorder treatment and improve our evidence-based practices. Our dedicated research staff produced an Outcomes Report this past spring, highlighting our findings, successes, and opportunities for growth.

The true measure of our success lies in the stories of transformation and recovery from our patients. This year, we have celebrated countless milestones with individuals who have overcome addiction and are now leading fulfilling, healthy lives. Their resilience and determination inspire us every day. You can read more about our joyous Alumni Reunion on page XX.

As we look ahead to the future, we remain steadfast in our commitment to providing compassionate, effective, and life-changing care. We are excited about the opportunities that lie ahead and are confident that, with your continued support, we will achieve even greater heights.

Thank you for being an integral part of our journey. Together, we are making a profound difference in the lives of those we serve.

With gratitude,



Alex Denstman, MBA
Co-CEO and President



Greg Hobelmann, MD, MPH
Co-CEO and President

cece



everything for recovery

PROGRAMMING

Since our founding in 1983, Ashley has treated over 65,000 patients with personalized care and dignity. While our model of care has evolved over time, we remain driven by the powerful vision with which our co-founders, Father Joseph C. Martin and Mae Ashley Abraham, started Ashley: to heal those suffering from substance use disorder (SUD) so that they may have the opportunity to experience the joy of living.

Father Martin and Mae Abraham were pioneers who created “Ashley: The Possible Dream” and made it a reality for generations to come. Their novel ideas and methods had a tremendous impact on the evolution of treating alcoholism at the time. It is this innovative spirit and commitment to quality care that continue to inspire us today.

As we look to the future, Ashley aims to utilize cutting-edge research to enhance the quality of care, improve patient outcomes and inform addiction medicine. We want to transform the field of SUD treatment and help shape the path forward without stigma, where everyone can seek and receive treatment. Together, we are working toward a future in which we can inspire others to follow our example of commitment to excellence and innovation to serve those who need our help.

Ashley's continuum of care and programming for alumni, youth, and families allow us to say we offer “everything for recovery.”



Inpatient Care

Ashley provides comprehensive inpatient care at our main campus in Havre de Grace, Maryland. This program offers a structured environment with 24/7 medical and clinical support, focusing on detoxification, therapy, and holistic healing to address the mind, body, and spirit.

Outpatient Care

For those who need flexibility, Ashley offers outpatient care that allows individuals to receive treatment while maintaining their daily responsibilities. This program includes individual and group therapy, medication management, and support for co-occurring disorders at our facility in Bel Air, Maryland.

Extended Care

The extended care program is designed for individuals who have completed a traditional 28-day program and need additional support. It focuses on building life skills, relapse prevention, and continued therapy to ensure long-term recovery.

Family Services

Ashley recognizes the impact of addiction on families and offers specialized programs to support them. This includes weekly virtual support meetings, educational resources, and therapy sessions to help families heal and support their loved ones in recovery. Our Family Services begin to break the generational cycle of substance use disorder and help the family heal as a unit from the disease's effects. We believe a family that recovers together stays together.

Alumni Services

Community is our backbone. Our commitment to our alumni extends far beyond the completion of their treatment program. We offer a variety of programs that provide ongoing support, foster connections among alumni, and create opportunities for them to give back to others on their recovery journey. We are dedicated to ensuring that our alumni remain closely connected to our community through regional events, Recovery Enrichment Days on campus, Alumni Reunions, in-person and virtual meetings and support groups, and through contact with our dedicated Alumni Support team.

Youth Services – The Clubhouse and The Roots

The Clubhouse by Ashley is a free, fun and safe after-school and summer program for Harford County teens between the ages of 12 and 17 in Aberdeen, Maryland. All activities, meals, snacks and transportation to and from The Clubhouse are 100% free. Ashley provides a safe environment for Clubhouse members to hang out, play video games and board games, cook, read, do homework, and check out events in the area. At The Clubhouse, we help our members have fun and relax without turning to substances.

research

Addiction continuously evolves as societies, substances and the health care industry change. To save lives, we must keep up with these changes and develop innovative, evidence-based approaches to patient care, treatment methods and recovery outcomes.



In partnership with faculty from **Johns Hopkins University School of Medicine**, our work has advanced scientific thought related to key topics in the field, including:

- Clinical Trials and intervention studies advance our understanding of effective methodologies
- Health Services efficacy study, reviewing post-treatment and recovery behavioral statistics to evaluate the lasting effects of treatment
- Basic science inquiries into interactions, clearances, and toxicology associated with substance use disorders

Treatment Outcomes studies that evaluate and connect behavioral outcomes, symptoms, and trends in inpatient and outpatient treatment models.



In April 2024, Ashley released its first Outcomes Report, highlighting our internal findings on patient treatment outcomes. The research involved reflects more than four years of patient data and reflects Ashley's unwavering commitment to evaluating the effectiveness of our treatment model and further enhancing and personalizing our standard of care.

Advanced research is fundamental to increasing positive outcomes and enhancing long-term recovery, and Ashley has made great strides in building our research infrastructure through our partnership with John Hopkins, ongoing data collection, and publishing our findings.



Tracking patient outcomes is one of the ways that we develop and improve our treatment plans at Ashley. Trac9 Informatics is our assessment tool to monitor specific factors that have a scientifically validated and evidence-based association with long-term recovery. We collect confidential data while patients are in our care, as well as one year after leaving Ashley's programs. While patients are in our care, the data we collect can directly help us adjust treatment plans based on their unique needs. The additional data we gather later helps us compare our methods to patient outcomes, advance research to better understand substance use disorder and learn how to treat it more effectively.



Ashley partners with Fitbit, an activity wearable, to monitor sleep, cardiovascular strain, and recovery metrics with personalized health and wellness insights. This device and technology platform not only helps us adjust treatment to fit our current patients' needs but also helps us advance our knowledge of substance use disorders.

**"Without Ashley, I really
might not be alive."**

Julian C.



alumni

The journey to long-term recovery is often anything but straightforward. For Julian, his story of perseverance and transformation meant he was a patient at Ashley three times. His unwavering determination and the support he received at Ashley have been pivotal in his successful recovery.

Rather than feeling defeated after needing to return to Ashley more than once, Julian now sees that each of his stays was an opportunity to learn something new about himself and what he needed to stay clean. Julian first entered Ashley in January 2023, and although he found it challenging, the experience was transformative. The calm, structured environment and serene campus provided him with the physical and mental space to begin his recovery journey. He also reignited his passion for music by engaging in activities like playing the piano and participating in weekly talent shows.

Julian credits the staff at Ashley as playing a crucial role in his recovery. He formed strong bonds with several staff members, including Lilly Cooper, Alumni Coordinator, who became a trusted confidant and a key figure in his support network. Julian also spoke highly of Joey Young, who always made him feel welcome, even after multiple admissions. Jamilyn Scott, his counselor, provided consistent support and understanding throughout his time at Ashley.

One of the unique aspects of Ashley that Julian found particularly helpful was the men's extended care house. This program introduced him to AA meetings and provided a structured environment where he could focus on his recovery. Julian emphasized the importance of this aspect of Ashley's treatment, saying, "I needed months of sobriety where I was forced to do activities and have fun and go to meetings for me to be able to do it on my own."

Julian's connection to Ashley goes beyond his time in treatment. He remains actively involved in the alumni community, attending events and maintaining friendships with both former patients and staff members. This sense of community and ongoing support has been vital in his continued sobriety.

Reflecting on his recovery journey, Julian expressed deep gratitude for Ashley, saying, "Without Ashley, I really might not be alive." His story is a testament to the power of a supportive environment and the dedication of the Ashley staff. Julian hopes his resilience and the special bond he shares with the Ashley community will inspire others on their path to recovery.

Donor

Mark Montgomery's story is one of resilience, dedication, and an unwavering commitment to giving back. Now 37 years in recovery, Mark has not only transformed his own life but has also become a beacon of hope for many others struggling with addiction.

Mark's professional journey began in the maritime industry, where he started as an entry-level accountant and eventually rose to the position of CEO. His career took him from New Jersey to Maryland, where he worked in the Port of Baltimore. It was during this time that Mark's path intersected with Ashley.

Mark's introduction to Ashley came through his involvement in bringing messages of hope and his own personal recovery story to addiction treatment centers and prisons. He began visiting Ashley once a month on Wednesday nights, delivering talks and supporting those in treatment. This commitment continued for over a decade, during which time Mark developed a deep respect for the premier quality of care provided at Ashley.

A pivotal moment for Mark was meeting Father Martin, who was "larger than life," as Mark recalls. Father Martin's powerful "Chalk Talks" and sense of humor left a lasting impression on Mark, cementing his fondness and affinity for Ashley. Over the years, Mark has seen firsthand the positive outcomes of Ashley's programs, witnessing many individuals' transitions from treatment at Ashley to long-term recovery.

Mark's connection to Ashley remained strong even after he moved to Vermont more than a decade ago. He continued to support the organization, both financially and through personal involvement. One notable instance was when Mark reached out to Ashley's Co-CEO, Alex Denstman, whom he has known for many years, to help a young man in Vermont who was struggling with addiction. Ashley's swift response and willingness to provide a scholarship to the individual reaffirmed Mark's faith in the organization's dedication to helping those in need.

When asked why he chooses to generously donate to Ashley, Mark's answer is simple: he believes in second chances. As an employer, he understands the importance of providing opportunities for individuals to rebuild their lives. Mark says that he is grateful that his business successes have enabled him to give back, and he views his support for Ashley as a way to change lives and offer hope to those who need it most.

By sharing his story, Mark hopes to encourage others to consider supporting Ashley, ensuring that more individuals have the chance to find recovery and reclaim their lives.

"I like to think of myself as an alumni provider of the message of hope to those that are struggling."

Mark M.



events

Father Martin Memorial Golf Outing - Teeing Off for a Great Cause

Started in 2000 to honor the life and legacy of Ashley's visionary co-founder, the Father Martin Memorial Golf Outing offers a day of friendly competition and camaraderie in support of Ashley's mission to transform and save lives. Funds raised through the Golf Outing go to the Lou Bantle Scholarship Fund, which assists veterans in accessing life-saving substance use disorder treatment at Ashley.

On June 3, 2024, a sold-out crowd of more than 100 golfers gathered on a beautiful, sunny day at the Elkridge Club in Baltimore. The day started with a delicious lunch, fellowship, a raffle for great items including a YETI cooler and car detailing, followed by a shotgun start on Elridge's pristine 18-hole course. The Golf Outing raised nearly \$60,000 for the Lou Bantle Scholarship Fund.

Ashley expresses our sincere thanks to the lead sponsors of the 2024 Father Martin Memorial Golf Outing and all golfers and donors.

George Harms Construction Co., Inc.
Roger T. Hoff, Sr.
Lockheed Martin
Martin Law Group, P.C.
MG Harry Greene Chapter of Assoc of US Army





17th Annual Mae Abraham Legacy Luncheon

On May 15, 2024, more than 170 Ashley supporters, friends, and employees came together to celebrate and honor the legacy of our co-founder, Mae Abraham. Ashley was honored to recognize Marot Williamson with the Mae Abraham Service Award and Becky Miller with the Mae Abraham Employee Excellence Award. These two extraordinary women embody Mae's service and dedication to helping women in recovery.

The Luncheon provides support for the Mae Abraham Scholarship Fund, assisting women in need of substance use disorder services and recovery at Ashley. Thanks to our strong community of donors, Ashley raised more than \$50,000 to support this vital fund!

Ashley extends our gratitude to the generous sponsors of the 2024 Mae Abraham Legacy Luncheon and all event attendees and donors.

Gold Sponsorship

American Design and Build
Verna Beiler/High Foundation
CCS Fundraising
Society of St. Sulpice

Silver Sponsorship

Stanley and Rosemary Marcuss
Phyllis Raskin-Hadley

Bronze Sponsorship

B.F. Saul Insurance
Alex and Laura Denstman
Homecoming Project
David and Maureen Nassef
Hilary Phelps
Marie Spearman
Maureen Suelau
Rachael Teacher







Alumni Reunion: The Power of Community

Ashley's 2024 Alumni Reunion was filled with fun, connection, and celebration! We welcomed more than 1,000 individuals and family members back to campus to celebrate their recovery journeys, share stories of resilience, and reconnect with the Ashley community.

Our incredible guest speakers, Greg Rogers and Nic Sheff, wowed everyone with their inspiring stories of recovery. Attendees of all ages enjoyed the petting zoo, played some games, indulged in delicious Kona Ice treats, and devoured some amazing barbecue. New Alumni T-shirts were a hit, along with Ashley hats, copies of One Step More, and slates from the original Chapel roof. Sale proceeds from these items support Ashley's mission to transform and save lives by integrating the science of medicine, the art of therapy, and the compassion of spirituality.

The Alumni Reunion is an annual reminder of the strength and hope that recovery brings, and how important Ashley's strong alumni community is a fundamental part of long-term recovery.

Annual Report Info FY2024

Gross Patient Revenue	\$63,529,000	
Total Revenue	\$43,252,753	
Net Patient Service Revenue	\$29,475,564	85%
Fundraising Revenue	\$3,348,010	10%
Investment Income	\$9,096,992	26%
Other Revenue (Oak Store and Grants)	\$1,332,187	4%
<hr/>		
Total Expenses	\$34,582,276	
Change in Net Assets	\$8,670,477	
Net Assets, Beginning of Year	\$105,416,264	
<hr/>		
Net Assets, End of Year	\$114,086,741	

Functional Expenses FY2024

Program Services	\$26,899,368	78%
Management and General	\$5,831,747	17%
Fundraising	\$1,851,161	5%
<hr/>		
Total Functional Expenses	\$34,583,024	100%

Other Revenue Detail

Other Oper. Revenue	\$1,290,058
Other Income	\$42,129
<hr/>	
\$1,332,187	

Charity Care

Charity Care FY24	\$2,182,169
-------------------	-------------

Patients Served FY24	1,328
MEC Patients Served FY24	43
OP (includes Elkton & Bel Air)	745
<hr/>	
Total Visits	15,873

Board of Directors

Jim Denvir, Chairman
Robin Davisson
Charlie Fenwick
John Finnerty
Dev Ganesan
Bob Johnson
Timothy Lewis
Jessie Nance
Phyllis Raskin-Hadley
Bill Bruns
Eric Strain
Toni Griswold

Executive Leadership Team

Alex Denstman, MBA
Co-CEO & President

J. Gregory Hobelmann, M.D., M.P.H.
Co-CEO & President

Elaina Denu
Chief of Staff & Corporate Secretary

Senior Management Team

Jennifer Aguglia, LCSW-C
Vice President of Clinical Services

Dr. Daniel Bochicchio
Director of Medical Services

Aryn Faile
Director of Revenue Cycle, Payer Relations and Contracts

George Gurrera
Director of Quality, Compliance, and Risk Management

Mark Hushen, M.Div., M.A.
VP of Spiritual Care & Wellness

Rebecca Miller
Sr. Director of Business Development

Jill Mikros
Sr. Director of Finance

Leadership Council

Shane Burke
Assistant Director of Community Support Services

Aaron Burzzese
Director of Patient Support Services

Marc Butler
Director of Clinical Outreach

Callie Hentz
Director of Intake

Wendy Insalaco
Director of Quality and Model of Care

Shana Koslowsky
Director of Marketing

Beau Malatesta
Director of Development

MaryJane Martz
Clinical Director of Residential Services

Jami Mayo
Research Manager

Noble Hall Ribbon Cutting April 1, 2024



FY24 Impact Report – Donor Listing

Ashley wishes to thank our strong community of supporters for helping to make our mission of transforming and saving lives possible. These donors make gifts to Ashley during fiscal year 2024 (July 1, 2023 – June 30, 2024).

Maghin Abernathy	Bel Air Middle School	Benedict Capuco	Elizabeth Cook
Caroline Abraham	BEL, Inc.	Jennifer Carl	Lilly A. Cooper
Achieve Behavioral Health	Belfast Valley Contractor	Murray B. Carlson	Marvin Cooper
Services LLC	David S. Bender	Joseph P. Carney	Molly Cooper
Patricia Acuff	Jayne Benfer	Christina Caron	Corbin Fuel Co., Inc.
Delbert Adams	Stephanie Bennett	Caron Treatment Centers	James E. Corby
Michael L. Adams, Jr.	Nancy Bergsten	Kristina Carr	Ethan Cordray
Addiction Connections Resource,	Nicholas Beucher	Catherine Carroll	Katherine Cornish
Inc.	Vineer Bhansali	Cyndie Carroll	Mark Cornish
Ashley Adkins	Wanda Binns	Mary Beth Carroll	Nancy R. Corson
Advanced Logistic Partners, Inc.	Thomas H. Blair	Randy Carroll	Patrick Cosgrove
John Agnew	Niki S. Block	Jeanie Carson	Jim Costigan
Jennifer Aguglia	Blue Cheetah Sports Timing	Erica Carter	Joseph Counterman
Kiersten Airey	Felix J. Boccadoro	Paul Casasco	Courtney Craig Gilbert Charitable
Anthony Akstin	Boies, Schiller & Flexner, LLP	Maria G. Casey	Foundation
Nathaniel Albright	Janet P. Bondi	Robert Castellini	Brad Cowen
Annette Allard Emery	John E. Bonitt	Sofia Castro	Brian Cox
Loreen D. Allen	Malcolm A. Borg	Carla Cathcart	Holly Cox
Patrick H. Allen	Larry P. Bormel	Jayne Cavett	Rebecca Cox
Paulette Allen	Monica Bostic-Bradley	Jessica Cavett	Christine Craig
Susan A. Alleva	Matthew Boutin	Kayla Cawthon	Todd K. Crandell
Alpas Wellness	Irene K. Boyle	CCS Fundraising	Bryan Crawford
Beth A. Ameche	Patricia Boyle	German Chacon	Jerry Creighton
American Design and Build, LTD	Cowen Bradley	James Chamberlain	David Cristman
America's Charities	James S. Bradley	Sandra Chambers	David E. Crone
AMFM Healthcare	Michael A. Bradley	Brian Chandler	Mary J. Cronin
Susan S. Anderson	Shawn Brandon	Julia Chang	Nancy Cross
Logan Angel	Steven Breidenstein	Charities Aid Foundation America	Richard Cucchiara
Anonymous	Shauna Bright	Peter E. Charles	Nicolle Cuffaro
APGCFU	Pamela Brooks	Charles M Shenberger Plastering,	Judith A. Cullen
Arundel Excavation	Timmy Brooks	Inc	Corissa Cummings
O'Connor G. Ashby	Brooks-Huff Tire & Auto	Scott A. Chase	Carolyn Cundiff
Rebecca Ashley	Denise Brown	John R. Chernock	Ralph S. Cunningham
Associated Sulpicians of the U.S.	Dennis Brown	Kim Childress	Dennis Czulewicz
Joseph Atkinson	Vida Broxson	Donald L. Christ	Ann W. Dahl
Melissa August	David Brumbaugh	Elizabeth D. Christian	Margaret O. Dalton
Jess Ayer	Nicole Bruns	Frances Chubb	Barbara Daly
B.F. Saul Insurance	Tracy Bruzzese	James Chwirut	Sheila Damkoehler
Tammy Baczynskyj	Jackson Bryant-Comstock	Augustus J. Cicala, Jr.	Janice Damon
Lawrence W. Bain, Jr.	Robert F. Buck	Rita Cicala	Gerald E. Darling, Esq.
Reilly M. Baker	Robin Buckley	Citizens Bank & Trust Company	Michael J. Darling
Sarah W. Baker	Frank Budnick	Damon Circosta	Christina Darwin
J. Nicholas Balducci	Kerry Budnick	Michelle R. Citren	John Daue
John Balducci	Jerry Bujno	Jonathan Clark, Jr.	Bryan C. Davis
Patrick Balsamo	John Burke	Clarke-Hook Foundation	Sarah Davis
Nettie Bandell	Shane P. Burke	Caroline D. Claytor	Stacey M. Davis
Bankers Healthcare Group, LLC	Josh Burns	Barbara Cleary	Nora Davison
Laverne Banks	William H. Burton	Carol Cleary	Krista Davisson
Robert C. Bantle	Emily Bussigel	Aryn Clements	Robin Davisson
Evelyn Barber	Marc R. Butler	Ashley Close	Jeremy Dawson
Michael Bassler	Maryjean Butler	Gregory Coates	Thomas Deck
Bastinelli Family Foundation, Inc.	Melissa A. Cafarelli	Karen Cohn	Jeffrey E. DeClue
Rebecca M. Batcha	Thomas D. Cafferty	Tamara Coleman	Raymond Demaio
Frances Battey	Karen Campbell	Andrew V. Colevas	Robert N. Dempsey
Karen Baynard	Bernadette Cannon	Stevie Combs	Joseph Denney
Nicholas Beckett	Kathleen Cannon	Jennifer A. Comer	Alex B. Denstman
Ann L. Bedford	Michael Cannon	Donna G. Connor	Elaina Denu
Patricia Bedsaul	Frank X. Capano	Raymond C. Conrad, III	Jim P. Denvir, III
Verna Beiler	Capstone Remodeling	Tracy Conway	Mary Ann Derrick

William Derrick
Kush Desai
Daniel B. Deters
Mary E. Devito
Sharon Diaz
Jennifer Dionne
Discovery Behavioral Health
Mario Diurno
John Dodge
Glenn M. Dodson
Edward Doheny
David Donabedian
Linda Donaldson
Steve Doniere
Patrick B. Donnelly
Patrick Dorsey
Thomas Doudiken
Michael R. Dowling
Michael F. Doyle
Timothy Doyle
Timothy G. Doyle
Jodi Drake
Susan Drew
Luke Driscoll
Jonelle Drugan
Susan-Grace Dubose
Lisa Dubrow
Michele Dudley
Donna L. Dulski
Thomas M. Dunn
John L. Dunnigan
Liselotte Durst
Gregory & Diane Dyer
Susan Dykstra
Edward Eagles
Lisa Ebersole
James Eder
Todd Eichler
Caroline C. Elbert
Elements of Style Salon
Eldersburg
Stevan Elliott
Valerie S. Ellis
C. Steven Elmore
Brenda W. Emmons
Stephan Engelhaupt
Kyle S. Englert
Richard English
Gregory C. Ensor
Barbara Evans
Dennis G. Evans
Isaac Evans
Steven C. Evans
Evolve Life Centers
Robert A. Eyberger
Kathryn A. Fabula
Fair Play Foundation
Jane Faith
Hope Fato
David Faulkner
Janet Faust
Richard Feinstein
Jon Feldman
Charles C. Fenwick, III
John Ferraris
Ann Fields
Raymond Finamore

Susan Finlay
John D. Finnerty
Maddie A. Fitzgerald
Suzanne Fitzpatrick
Mary Fleishman
Nancy Fleming
James A. Flood, Jr.
Judith C. Flynn
Stacey Flynn
Colleen Fogarty
Cheryl E. Foley
Michael Foley
William P. Foley
Judy S. Folus
Christine Forrester
Diana Forshey
Marie A. Fosello
Mary G. Fowler
Donald Foy
Gary Frace
Dimitrios Fragoyannis
France-Merrick Foundation
Carol G. Franklin
Katherine Freeman
Tracy Freund
Jon Frey
Leslie J. Friedman
Friends of Mann House Inc.
Charlie Fusco
Michael J. Fusting
Sean W. Gallagher
John Galvany
Gamma Phi Beta PC o6
Devarajan Ganesan
Brandy Garrett
Justin Garrity
Lane M. Gary
James S. Garza
Anne Gawthrop
Amy Gaynor
Elizabeth Gearon
Meg Geisewite
Cheryl Gendron
Janet Genovese
George Harms Construction Co.,
Inc.
Harry Gesner
Richard Giacco
Louis Giannola
Edward Giese
Thomas S. Gimbel
Eugene T. Gligor
Bill Goeller
Mo Goff
Joan Gold
Nevada Gongora
Christopher Gordon
Ed and Carol Goundry
Raymond P. Grannas
Dean I. Granot
Trish Green
Howard Greenspan
Sandra L. Greer
Sharon K. Griffin
Toni I. Griswold
Virginia J. Grube, Jr.
Ted Guastello

Dorothea Gyorody
MaryEllen Hackett
William Haggerty
Hilarie Hall
Benjamin T. Hamby
Josh Handt
John Hannan
Brian Hans
Russell Hardesty
Dollie J. Hare
Harford Community College
DeLaine Hargett
Robert G. Harms
Jeffrey W. Harris
Jacquie Hart
Ralph Hartgrove, Jr.
Corey Hassett
Jessica S. Hatcher
Paulette Hatcher
Thomas Hatcher
David Hatem
Kaetlyn Hauser
Pam Hazen
Jessica Hearne
Gordon Heavren
Sally A. Helman
Tamar Hendel-Fishman
Eileen Henderson
Richard G. Herbig
Nathan Herbst
Richard J. Herbster, Jr.
Ken Herman
Dana Herrera
Matthew J. Herrington
Jyuji Hewitt
Beth Heydemann
James Hickey
Denise Hicks
Crystal Hicks-Brown
High Foundation
High Watch Recovery Center
Bland Hill
Philip Hillsman
Kevin R. Hines
Robert J. Hitcho
HM International LLC
Betsey Hobelmann
Charles F. Hobelmann
J. G. Hobelmann
Mary Hobson
John E. Hodge, Sr.
John Hoel
Roger T. Hoff, Sr.
Wallace F. Holladay, III
Vicki Hollis
Paul Holtberg
Anthony Holtry
Laura D. Holtry-Hughes
Holy Trinity Episcopal Church
Homecoming Project, Inc.
Michelle Hooper
Scott Horigan
Wanda Howard
Michael J. Howe
Wilbur Howell
June V. Huber
Christine Hudson

Thomas G. Hughes
William A. Hurlock
Laura Hurst
Richard Issa
Christopher Jackson
Joseph Jackson, Jr.
Laura Jackson
Vicki Jackson
Brenda Jackson-Wright
Michael Jacober
Scott James
Thomas W. Jankiewicz
George A. Jeffrey
Andrew E. Jenkins
Kevin Jensen
Jennifer Jerrett
Jessica Love Design
Jewish Community Foundation
Robert E. Jochenning
Lloyd Johns, Sr.
Laurence Johnson
Louise Johnson
Robert J. Johnson, Esq.
Sarah Johnson
Geoff Jones
Lisa Z. Jones
Edward J. Juel
Robin S. Kable
Stephen M. Kahoe
Maggie Kane
Veronica Kannan
Tammy Kapuscinski
James/Sarah Karafa
Frederick R. Karp
Joseph A. Kaschenbach, Sr.
Robert Kasten
Steven Kaufman
Colton Keating
Eva Kedar
Alicia Kelly
Christopher W. Kelly
Kaitlin Kelly
Maureen Kelly
Patrick M. Kelly
Raymond J. Kelly, Esq.
Leslie M. Kelso
Sharon S. Kennedy
Jane F. Keough
Denny L. Kephart, D.D.S.
Christopher P. Kerr
David O. Keyser
Kimberly A. Kimmach
David King
Donna King
Joyce King
Rachel K. Kirk
Rich Klina
Frank Kline
John P. Kmetz
Erin F. Knight
Heather Knutsen
Rich Koeppel, LCADC
Grace C. Kolberg
Shana Koslowsky
Jennifer S. Kovachich
Angela K. Krapf
Katrina Kroart

Charles Kump
Heidi Kurgat
Moiria M. Kylie
Mary L
Sarah Landry
Mary Lane
Lillian E. Lang
Jennifer Lang (Schissel)
John P. Larkin
Meron M. Larkin
Rivers Larry
Mary P. Larson
Mathew B. Lasky
Brett Lawrence
Christopher J. Lawrence
Claudia R. Lawson
Briana Lee
Gary Lefebvre
Jeffrey Leggett
Eileen M. Lenz
Christina Leu
Doug Levy
Sue Libertini
Leroy Lindell
David Linski
Lockheed Martin
Deborah Long
John R. Long, III
Jorge L. Lopez-Balboa
LS Systems
John R. Lucas
Natalie LupoLupo
Randall A. Lusk
Susan Lynch
Thomas M Dean
Thomas F. MacAniff
Scott MacGregor
Amy Mack
Pamela MacKey
Madden Charitable Fund
Daniel G. Madigan
John Madigan
Eugenia Magafan
Cathy Maggard
Edwin J. Mahan
Linda R. Mahoney
Angela J. Mahosky
Beau Malatesta
Christopher Malatesta
Diane Malatesta
Keith R. Malley
Charles I. Mallory
David J. Mantz, Sr.
Louis Marcell
Stanley J. Marcuss
James R. Marotta
Anita L. Marquitz
Jeff Martin
Kurt J. Martin
Martin Law Group, P.C.
MaryJane Martz
Christopher H. Masker
Bo Massa
Gregory Mathis
Anthony Matthews, III
Susan Matthews
Chris Matton

Steve Maurer
Gretchen Mayne
Johanna McAllister
Edward McBride
Joe McCabe
John McCardell
Terry McCart
Kaitlin M. McCarthy
McCaskey Family Holding
Company
Laura A. McClaren
Mindy McCloskey
R. Bruce McCommons
Brian J. McConnell
Georganne McCord
Gabriele McCormick
McCrosson & Stanton
Dorene McDaid
Timothy L. McDonough
Debbie McFadden
Peter R. McGahey
Jen McGeehan
Thomas McGowan
Mary Ann McGrail
Thomas A. McGrain, Jr.
Liam McGrath
Shirley A. McKeown
Yvonne McManus
Mark McNutt
Laura Meagher
Eric Meany
Raymond Mee
David Meeker
William Melton
Mark G. Meltzer
Thomas Melzer
Gregory Mercer
Merriken Family Charitable Fund
Loretta Mester
MG Harry Greene Chapter of Assoc
of US Army
Gianni Migliaccio
Kathleen Mikkelson
Jay D. Miller, Jr.
Sarajane Milligan
Carl T. Miltenberger
Richard Minutella
Mimi Mira
Debby G. Mirvis
Juanita R. Mohler
Marissa Molinaro
Glen Moncilovich
Chad Monk
Mark Montgomery
Sherry G. Moquin
Carol Moran
Denise Mornini
Jeanie Morris
Henry L. Mortimer
Carlton Moser
Lisa Motluck
Louis J. Muglia
Sheilah And Cam Mullins
Daniel Munley
Emily Murphy
Kelly J. Murphy
Laura Murphy

Susan Murphy
Charles Murray
William J. Murray
Noah Murrell
Charlie Myers
Michael W. Nagy, Jr.
David T. Nassef
Maureen Nassef
Hasti Nazem
Adam E. Nebrich
Melissa J. Needle
Jeff Nelligan
Mary Nemec
Melissa Nevitte
New Paradigm Recovery
New Waters Recovery
Brandon J. Newlands
David Nielson
Lloyd Noble, II
Dylan Norris
Paul K. Nowak
Emily Nunn
George S. Nyquist
John OBrien
Alice R. O'Brien, LPCMH
Bridget R. O'Brien
Mara L. O'Brien
Kim Oden
Maricka Oglesby
Carol T. O'Hara
Catherine J. Olazagasti
Daniel Olmes
Stephanie Olson
Michael H. Orr, Sr.
Derreck Orr, Jr
Angela B. Ortado
Mariana Orzech
Allen Oseroff
Michael H. O'Shaughnessy
Judy C. Oster
Steven Oster
Raymond D. O'Toole, Jr.
Kathleen Ott
Jana Owens
Wayne Owens
Brian Pace
Richard Paek
Charles Palmer
Jillian Parente
Susan Patterson
Paypal Charitable Giving Fund
Daniel Pecoraro
Tasha Peniche
Antonio Pera
Christian Peranzi
Maritza Perez
Edward Perraut
Juliea M. Peters
Sam Peterson
Valerie Petrovic
Frederic D. Pfening, III
Anne Phelan
Brooks Phelan
Hilary Phelps
Philip A. Zaffere Foundation, Inc.
Eric B. Phillips
Jerold Phillips

Howard M. Phoebus
Robert Pichini
Ralph W. Pike
Jeffrey J. Pilling
Gregory C. Pinkard
Kevin W. Piper
Chris Pivot
PNC Bank
PNM Rentals
Isabel Pollen
James Pou
Anne M. Powell
Emmett D. Powell
Kathryn and John Preston
Michael A. Preston
D. Douglas Price
Robert R. Procopio
Janet Profeta
Theodore S. Proxmire
Greg Prybylski
John Putschi
William C. Pyron
Tamara Rains
J. Stephen Ramey
Aaron Ramirez
Bruce Ramirez
Marc Randolph
Phyllis R. Raskin-Hadley
Joyce Ratliff
Rishi K. Ratwani
Taylor Ray
Malarie Rayburn
Pattie Reaves
Eric Rebbert
David H. Reed
Joe Reese
Ralph Reeves
Regenerative Medicine Institute
Release Recovery Foundation
Debora A. Relyea
LaTonia Rich
Kathy Richards
Eric Richardson
Pamela Rickard
Catherine I. Riley
Bruce T. Ritter
Richard Ritter
Bill Rivell
Pat Y. Rizzuto
Karen Roberts
Daniel K. Robie
Frederick A. Robinson, III
Michael J. Rock
Jordan Rodich
Marc Rodriguez
Brian Rogers
Nathan Roling
Chris Roman
Karen Romecki
Nan Rope
Sandra Rosenbach
Round Room Gives, Inc. dba TCC
Richard Roysdon
Luis Ruiz
Barbara Russell
Peggy A. Russell
Kathy Ruxton

Beth S.
 Donato Saponaro
 Christopher M. Sause
 Christopher Sause
 Frederick G. Savage
 Nancy Savage
 John A. Sawchuk
 Eric Schaeffer
 Kim L. Schilpp
 Chase G. Schirmer
 Reed A. Schmidt
 Sharon Schmidt
 Paul F. Schmitz
 Ryan Schneidewind
 Allison Schnitzer
 Barry Scholtz
 Stuart Schrantz
 David Schuler
 Brian Schultz
 Schwab Charitable
 Patricia Schwartz
 Joseph Schwarz
 Debra Sciabarrasi
 Jamilyn Scott
 Rosemarie Sedney
 Thomas Seibold
 Tomer Seifan
 Christopher Selig
 Gary Serrao
 MJ Severance
 Wade Sewell
 Shawan Leadership: John Frisch
 Henry Shelley
 Sher Properties Inc.
 Chris Sherlock
 Kevin M. Shertz
 Ellen Shiery
 Gary Shiffman
 Robert Shrader
 Sydney Shupe
 Daniel & Felicity Siegel
 Rosalind Siekierka
 Daun Sigafoose
 Dave Silbert
 Yanik Silver
 Ben Silverman
 John N. Simpson
 Keith J. Sinnott
 Larry Skahan
 Edward Slattery
 Jerilene Slaughter
 Laura Slayman
 Carol A. Smith
 Richard J. Smith
 Terry A. Smith
 Snee, Lutche & Helmlinger, P.A.
 Brenda Snow
 Margaret P. Snowdon
 Elizabeth Snowdon Bonner
 Keith W. Snyder
 Sodality of the Church of the
 Immaculate Conception
 julia solazzo
 Janet Somerville
 Logan Sorensen
 Chris Spanos
 Mary C. Spearing

Marie Spearman
 Ned L. Spells, Jr.
 Kelly Sperr
 St. Mark Roman Catholic Church
 Christine St. Germain
 St. Mark Fallston
 Alexias Stafilas
 David Stech
 Bryce E. Stephens
 Ronald L. Stevens, Sr.
 Halley Stewart
 Kelly Stinson
 Charles Stipancic, Jr.
 Eric Strain
 Becky Streett
 James Strickler
 Kathleen Strobel
 Maureen K. Suelau
 Mark Sullivan
 Sully Sullivan
 Sean Swasey
 Steve Swayne
 Katherine A. Sweeney
 Julia A. Swindells
 Richard Swingle
 Eric Szabo
 Michele J. Szoltyk
 David Taddeo
 Thomas/Claire Tamm
 Pat Tano
 Timothy E. Targett
 Gay Tate
 Joseph A. Tate
 Lee Tayson
 Rachael H. Teacher
 Paige Terry
 Melos Teymorian
 The Benevity Community Impact
 Fund
 The Bilby Foundation
 The Charles and Karin Hoffman
 Fund
 The Fancy Hill Foundation
 The Freedom Center
 The Keyes-Sulat Family Fund
 The Michelle Heavern Snoopy
 Fund
 The Osborne Family Foundation
 The Society of Italian
 Businessman INC
 The Spence Group of Keller
 Williams Integrity
 Camilla Thomas
 Trudi M. Thomas
 Frank K. Thomson, III
 Gerhard S. Thoresen, III
 Thomas P. Thornton
 James Throne
 Kathleen A. Thurston
 Ralph Tildon, Jr.
 Mitch M. Tillett
 Tim Dunnigan, LCSW-C
 Norman R. Tingle, Jr.
 Richard D. Townley
 John R. Townsend
 Phil Traini
 Amy Traughber

Terry Triplett
 Emily Truong
 Roman Tsunder
 Glenn G. Tucker
 Ilir Tufa
 Joseph Tunney
 Brad Turlington
 Hamilton Tyler
 Gerrit Tysse
 UBS
 United Way of Central Maryland
 United Way of Delaware
 Catherine Urch
 Michael P. Urgo
 Jennifer van Goethem
 Seth Vannatta
 Katherine A. Vavrina
 Chip Veirs
 Verve Behavioral Health
 Jessica A. Vickers
 Ellen Vizzini
 Antonio J. Vogt
 Stephanie Vogt
 Kathy Volk
 Walmart
 Robert J. Walsh, Jr.
 Mary M. Ward
 Scott M. Wartel
 John Wassell
 Mark A. Wasson
 Joseph Waterman
 Kiernan Waters
 Elizabeth Watson
 Rebecca Watson
 Jane Weaver
 Kayla Weaver
 Karen Weber
 George D. Webster, Jr.
 Nancy Wehe
 Edward Welch
 Judston Welling
 Amber L. Wellington
 David White
 Elizabeth J. White
 Marybeth B. White
 Richard W. Whitlow
 Robert Willard
 Erin Willett
 Linda Williams
 Matthew Williams
 Patrick H. Williams
 Sabrina E. Williams
 Stan Williams, Jr.
 Katherine W. Williamson
 Marot W. Williamson
 Rushton Williamson
 Kevin M. Wilson
 Dan Winger
 John C. Wise
 Ronald Witherup
 Barbara Woods
 Shirley Word
 Kristen C. Wronski
 David B. Wuehrmann
 John R. Young
 Michael Yudd
 Joseph M. Zabel

John J. Zanardelli
 Suzanne and John Zanardelli
 Stori Zicchino
 William G. Zitzmann, Jr.
 Anthony J. Zorzit
 Assumpta Zweig