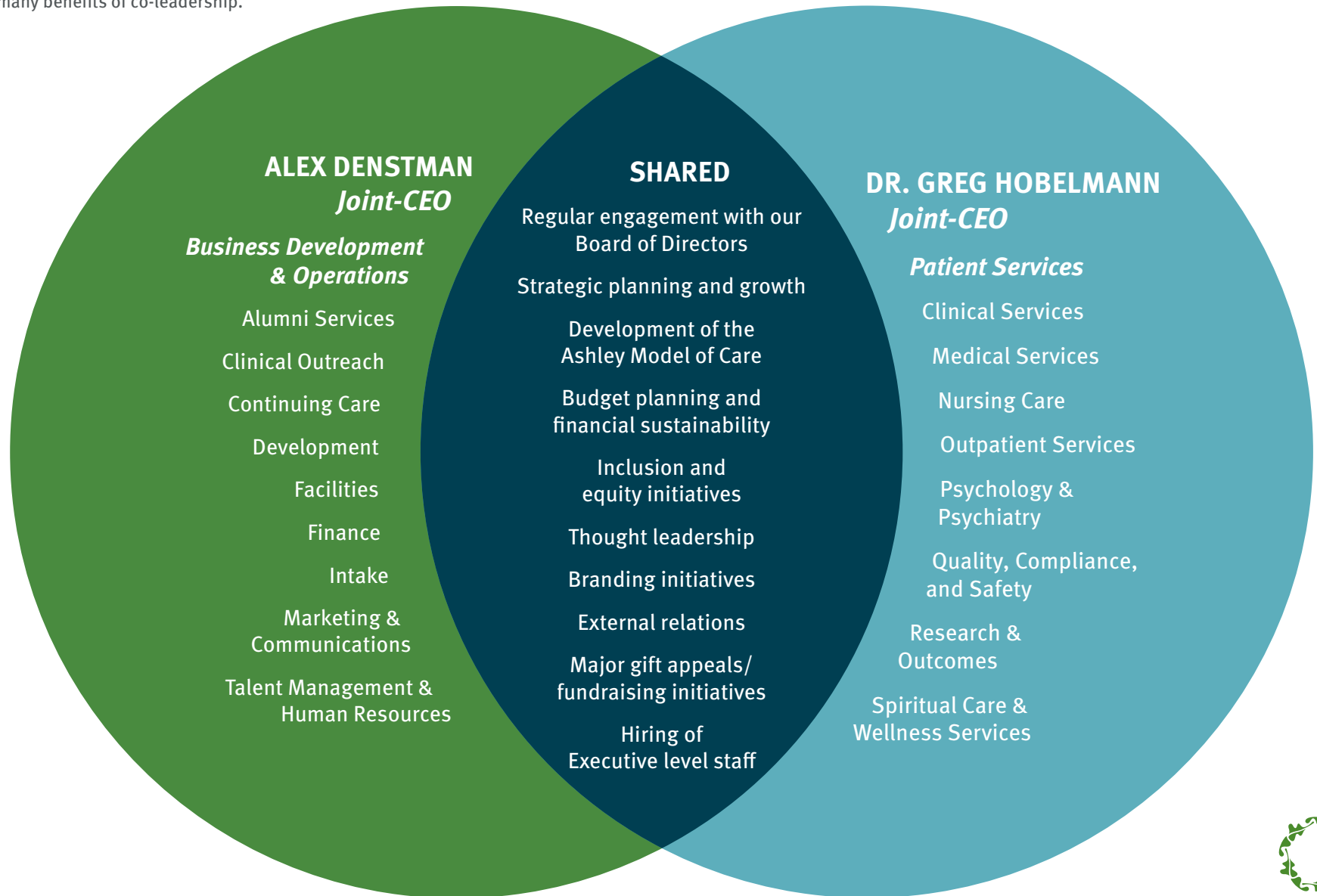


CO-LEADERSHIP RESPONSIBILITIES

To better orient you to our co-leadership model, we want to clearly define the roles and responsibilities of our co-leaders. Both will have distinct areas of oversight and will remain very involved in our day to day operations. As you can see, the things which we consider most critical to the advancement and long-term growth of Ashley will be co-led. Alex and Greg will strive to collaborate to the greatest extent possible, so we can align our efforts, optimize our performance, and realize the many benefits of co-leadership.



Both Alex and Greg will be primarily supported by Chief of Staff, Elaina Denu, and Senior Advisor & Envoy, Dave Nassef. The recently formed Executive Committee of the Board of Directors will provide ongoing oversight and counsel.